

**HUMOROUS • EDUCATIONAL • FUN!**



# **GIANT** **microbes**®

**...a million times  
actual size!**



**GIANTmicrobes.com**

# What are GIANTmicrobes?

GIANTmicrobes are plush gifts that look like common microbes and cells - a million times actual size!



Info card included!



Microbes are a huge part of our lives. Think about it: from the trillions of bacteria living on our skin and in our gut, to our brain and blood cells. From the cold virus to penicillin. We are all a civilization of microscopic organisms!

# Holiday Boxes & Seasonal

## Heart Boxes

Each gift box includes 5 embroidered mini microbes



**Heart Warming**  
Kissing Disease, Sperm Cell, Egg Cell, Penicillin and Pink Amoeba

GMUS-BX-0008

**Heart Burned**  
Herpes, Chlamydia, Pox, HPV and Penicillin

GMUS-BX-0007

## NEW! Themed Gift Boxes



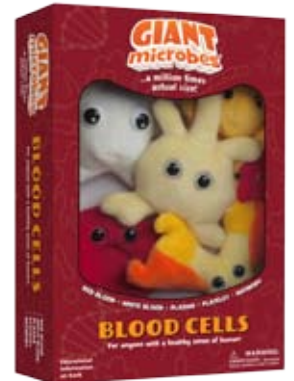
**TAINTED LOVE**  
GMUS-BX-0101



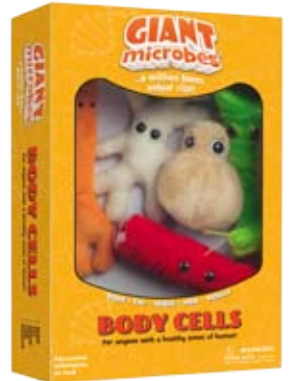
**SICK DAY**  
GMUS-BX-0103



**LIFE'S ORIGINS**  
GMUS-BX-0104



**BLOOD CELLS**  
GMUS-BX-0105



**BODY CELLS**  
GMUS-BX-0106



**ORGAN CELLS**  
GMUS-BX-0107



**BIOHAZARDS**  
GMUS-BX-0108



**EXOTIC VACATION**  
GMUS-BX-0109

AND MORE! COMING SOON... **BLIND DATE** GMUS-BX-0102 **CALAMITIES** GMUS-BX-0110 **GUT CHECK** GMUS-BX-0111 **VACCINES** GMUS-BX-0112

## Halloween



**Halloween Box**  
Frightfully fun with 5 of our scariest microbes in costume

GMUS-BX-0004

## Christmas

### Christmas Ornament Boxes

Each gift box includes 5 best-sellers dressed up for the holidays!



**STOCKING BOX** GMUS-BX-0005 **TREE BOX** GMUS-BX-0003 **WREATH BOX** GMUS-BX-0006 **STAR BOX** GMUS-BX-0009

## Graduation



**BRAIN CELL GRAD KEY CHAIN**

GMUS-KC-0101

**BRAIN CELL GRAD ORIGINAL PLUSH**

GMUS-PD-0101

### Common Cold Santa

Our most popular microbe wearing a festive Santa hat!



GMUS-PD-0161

# PRODUCT LINE

## Cells & Body

### Sizes



## Family Health

**Antibody**  
IMMUNOGLOBULIN  
GMUS-PD-0016

**Beta Cell**  
INSULIN (B CELLS)  
GMUS-PD-0061

**Bone Cell**  
OSTEOCYTE  
GMUS-PD-0085

**Brain Cell**  
NEURON  
GMUS-PD-0100  
KC, MM, GG, XL

**DNA**  
DEOXYRIBONUCLEIC ACID  
GMUS-PD-0200

**Egg Cell**  
OVUM  
GMUS-PD-0245  
KC, MM, GG

**Eye: Rod & Cone**  
PHOTORECEPTOR CELLS  
GMUS-MM-0247

**Fat Cell**  
ADIPOCYTE  
GMUS-PD-0250  
MM

**Hair**  
PILUS  
GMUS-PD-0342  
\*5 COLORS AVAILABLE

**Heart**  
HEART ORGAN  
GMUS-PD-0360  
KC

**Heart Cell**  
CARDIOMYOCYTE  
GMUS-PD-0365

**Human Being**  
HOMO SAPIENS  
GMUS-PD-0420

**Liver Cell**  
HEPATO CYTE  
GMUS-PD-0457

**Muscle Cell**  
MYOCYTE  
GMUS-PD-0528

**Nerve Cell**  
NEURON  
GMUS-PD-0535  
KC, MM, GG

**Plasma**  
BLOOD PLASMA  
GMUS-PD-0572  
MM

**Platelet**  
THROMBOCYTE  
GMUS-PD-0573  
MM

**Red Blood Cell**  
ERYTHROCYTE  
GMUS-PD-0610  
KC, MM, GG

**Skin Cell**  
KERATINOCYTE  
GMUS-PD-0685

**Sperm Cell**  
SPERMATOZOON  
GMUS-PD-0710  
KC, MM, GG

**Stem Cell**  
STEM CELL  
GMUS-PD-0725  
KC, MM, GG

**White Blood Cell**  
LEUKOCYTE  
GMUS-PD-0800  
KC, MM, GG

## STDs

**Chlamydia**  
CHLAMYDIA TRACHOMATIS  
GMUS-PD-0130  
KC, MM, GG

**Clap (Gonorrhea)**  
NEISSERIA GONORRHOEAE  
GMUS-PD-0150  
KC, MM, GG

**Crab Louse**  
PTHIRUS PUBIS  
GMUS-PD-0175

**Herpes**  
HERPES SIMPLEX VIRUS 2  
GMUS-PD-0390  
KC, MM, GG

**HIV**  
HUMAN IMMUNODEFICIENCY VIRUS  
GMUS-PD-0400  
MM, GG

**HPV**  
HUMAN PAPILLOMAVIRUS  
GMUS-PD-0410  
MM

**Pox (Syphilis)**  
TREPONEMA PALLIDUM  
GMUS-PD-0590  
KC, MM, GG

**Trichomoniasis**  
TRICHOMONAS VAGINALIS  
GMUS-PD-0758

**Acidophilus**  
LACTOBACILLUS ACIDOPHILUS  
GMUS-PD-0005

**Athlete's Foot**  
TRICHOPHYTON MENTAGROPHYTES  
GMUS-PD-0020  
MM, GG

**Bad Breath**  
PORPHYROMONAS GINGIVALIS  
GMUS-PD-0040

**Beer & Bread**  
SACCHAROMYCES CERVISIAE  
GMUS-PD-0060  
MM, GG, KC

**Bifido**  
BIFIDOBACTERIUM LONGUM  
GMUS-PD-0062

**Breast Cancer**  
MALIGNANT NEOPLASM  
GMUS-PD-0104

**Cancer**  
MALIGNANT NEOPLASM  
GMUS-PD-0108

**Candida**  
CANDIDA ALBICANS  
GMUS-PD-0109

**Cavity**  
STREPTOCOCCUS MUTANS  
GMUS-PD-0110

**Chickenpox**  
VARICELLA-ZOSTER VIRUS  
GMUS-PD-0120  
KC, MM

**Common Cold**  
RHINOVIRUS  
GMUS-PD-0160  
KC, MM, GG, XL

**Cough**  
BORDETELLA PERTUSSIS  
GMUS-PD-0170  
MM

**Diarrhea**  
CAMPYLOBACTER JEJUNI  
GMUS-PD-0195  
MM, GG

**E. Coli**  
ESCHERICHIA COLI  
GMUS-PD-0220  
KC, MM, GG

**Ear Ache**  
STREPTOCOCCUS PNEUMONIAE  
GMUS-PD-0230  
MM

**Flu**  
ORTHOMYXOVIRUS  
GMUS-PD-0290  
KC, MM, GG

**Food Poisoning**  
BACILLUS CEREUS  
GMUS-PD-0292  
MM

**Hay Fever**  
GRASS POLLEN  
GMUS-PD-0350  
MM

**Hepatitis**  
HEPATITIS C VIRUS  
GMUS-PD-0380  
MM

**Kissing Disease**  
EPSTEIN-BARR VIRUS  
GMUS-PD-0430  
KC, MM, GG

**Measles**  
MORBILLIVIRUS  
GMUS-PD-0515

**Penicillin**  
PENICILLIUM CHRYSOGENUM  
GMUS-PD-0550  
MM, GG

**Pimple**  
PROPIONIBACTERIUM ACNES  
GMUS-PD-0570

**Pneumonia**  
STREPTOCOCCUS PNEUMONIAE  
GMUS-PD-0575  
MM

**Polio**  
POLIOVIRUS  
GMUS-PD-0580

**Prostate Cancer**  
MALIGNANT NEOPLASM  
GMUS-PD-0595

**Rubella**  
RUBELLA VIRUS  
GMUS-PD-0630

**Salmonella**  
SALMONELLA TYPHIMURIUM  
GMUS-PD-0640  
MM, GG

**Shingles**  
HERPES ZOSTER  
GMUS-PD-0675

**Sore Throat**  
STREPTOCOCCUS  
GMUS-PD-0700  
KC, MM, GG

**Stomach Ache**  
SHIGELLA  
GMUS-PD-0730  
KC, MM, GG

**Tetanus**  
CLOSTRIDIUM TETANI  
GMUS-PD-0742

**Ulcer**  
HELICOBACTER PYLORI  
GMUS-PD-0770  
MM

**Yogurt**  
LACTOBACILLUS BULGARICUS  
GMUS-PD-0825  
MM

# PRODUCT LINE

## Critters

### Sizes

**KC**  
Keychains: 3 - 4"

**PD**  
Originals: 5 - 7"

**MM**  
Petri Dishes  
3 mini microbes

**XL**  
NEW! 10 - 15"

**GG**  
Gigantics: 16 - 20"

## Diseases

<b>Algae</b> ANABAENA GMUS-PD-0010 MM	<b>Amoeba</b> AMOEBIA PROTEUS GMUS-PD-0011 *AVAILABLE IN 3 COLORS KC, MM, GG	<b>Bed Bug</b> CIMEX LECTULARIUS GMUS-PD-0050 KC, MM, GG	<b>Black Ant</b> LASIUS NIGER GMUS-PD-0065	<b>Black Lab Mouse</b> C57BL/6 GMUS-PD-0075	<b>Bookworm</b> ANOBIUM PUNCTATUM GMUS-PD-0090 KC, MM, GG	<b>Brain-Eating Amoeba</b> NAEGLERIA FOWLERI GMUS-MM-0098	<b>C. Elegans</b> CAENORHABDITIS ELEGANS GMUS-PD-0107
<b>Copepod</b> CENTROPAGES HAMATUS GMUS-PD-0165 MM	<b>Dust Mite</b> DERMATOPHAGOIDES PTERONYSSINUS GMUS-PD-0210 MM	<b>Euglena</b> EUGLENA GRACILIS GMUS-PD-0246 MM	<b>Fruit Fly</b> DROSOPHILA MELANOGASTER GMUS-PD-0293	<b>House Fly</b> MUSCA DOMESTICA GMUS-PD-0405 MM	<b>Krill</b> EUPHAUSIA SUPERBA GMUS-PD-0440	<b>Leech</b> HIRUDO MEDICINALIS GMUS-PD-0445 MM	<b>Louse</b> PEDICULUS CAPITIS GMUS-PD-0460 MM
<b>Maggot</b> LUCILIA SERICATA GMUS-PD-0495 MM	<b>Martian Life</b> ALH 84001 GMUS-PD-0510	<b>Minnow</b> PIMEPHALES NOTATUS GMUS-PD-0518	<b>Mosquito</b> CULEX PIPIENS GMUS-PD-0520 MM	<b>Paramecium</b> PARAMECIUM CAUDATUM GMUS-PD-0545	<b>Red Ant</b> SOLENOPSIS INVICTA GMUS-PD-0605 MM	<b>Red Tide</b> ALEXANDRIUM TAMARENSE GMUS-PD-0620 MM	<b>Rotifer</b> BRACHIONUS CALYCIFLORUS GMUS-PD-0625
<b>Scum</b> BIDDULPHIA GMUS-PD-0670 MM	<b>Sea Sparkle</b> NOCTILUCA GMUS-PD-0660	<b>T4</b> T4-BACTERIOPHAGE GMUS-PD-0735 MM	<b>Tapeworm</b> TAENIA OVIS GMUS-PD-0737	<b>Tick</b> IXODES SCAPULARIS GMUS-PD-0745	<b>Vibrio Fischeri</b> VIBRIO FISCHERI GMUS-PD-0771	<b>Waterbear</b> HYSIBIUS DUJARDINI GMUS-PD-0772 MM	<b>White Lab Mouse</b> BALB/C GMUS-PD-0805

<b>Anthrax</b> BACILLUS ANTHRACIS GMUS-PD-0015 MM	<b>Babesia</b> BABESIA MICROTI GMUS-PD-0035	<b>Bird Flu</b> INFLUENZA A VIRUS H5N1 GMUS-PD-0063 MM	<b>Black Death</b> YERSINIA PESTIS GMUS-PD-0070 MM, GG	<b>Botulism</b> CLOSTRIDIUM BOTULINUM GMUS-PD-0095	<b>C. Diff</b> CLOSTRIDIUM DIFFICILE GMUS-PD-0105 MM	<b>Chagas</b> TRYPANOSOMA CRUZI GMUS-PD-0117	<b>Cholera</b> VIBRIO CHOLERAEE GMUS-PD-0140 MM
<b>Dengue Fever</b> DENGUE VIRUS GMUS-PD-0180	<b>Ebola</b> EBOLA VIRUS GMUS-PD-0240 MM, GG	<b>Flea</b> CTENOCEPHALIDES FELIS GMUS-PD-0270 MM	<b>Flesh Eating</b> STREPTOCOCCUS PYOGENES GMUS-PD-0280 MM, GG	<b>Gangrene</b> CLOSTRIDIUM PERFRINGENS GMUS-PD-0295 MM	<b>Giardia</b> GIARDIA LAMBLIA GMUS-PD-0320	<b>Heartworm</b> DIROFILARIA IMMITIS GMUS-PD-0370 MM	<b>Leishmania</b> LEISHMANIA TROPICA GMUS-PD-0450
<b>Leprosy</b> MYCOBACTERIUM LEPRAE GMUS-PD-0452	<b>Listeria</b> LISTERIA MONOCYTOGENES GMUS-PD-0455 MM	<b>Lyme Disease</b> BORRELIJA BURGDOERFERI GMUS-PD-0470 MM	<b>Mad Cow</b> BOVINE SPONGIFORM ENCEPHALOPATHY GMUS-PD-0480 KC, MM, GG	<b>Malaria</b> PLASMODIUM FALCIPARUM GMUS-PD-0490 MM	<b>Mange</b> SARCOPTES SCABEI GMUS-PD-0500 MM	<b>Meningitis</b> NEISSERIA MENINGITIDIS GMUS-PD-0517	<b>MRSA</b> MULTIPLE-RESISTANT STAPH AUREUS GMUS-PD-0525 KC, MM
<b>Norovirus</b> NOROVIRUS GMUS-PD-0540 MM	<b>Rabies</b> RABIES VIRUS GMUS-PD-0600 MM	<b>Rotavirus</b> ROTAVIRUS GMUS-PD-0623 MM	<b>Sleeping Sickness</b> TRYPANOSOMA BRUCEI GMUS-PD-0690 MM	<b>Staph</b> STAPHYLOCOCCUS AUREUS GMUS-PD-0720 MM	<b>Swine Flu</b> INFLUENZA A VIRUS H1N1 GMUS-PD-0734 KC, GG	<b>TB</b> TUBERCULOSIS GMUS-PD-0740 MM	<b>Toxic Mold</b> STACHYBOTRYS CHARTARUM GMUS-PD-0755
<b>Toxoplasmosis</b> TOXOPLASMA GONDII GMUS-PD-0756 MM	<b>Typhoid Fever</b> SALMONELLA TYPHI GMUS-PD-0760	<b>West Nile</b> WEST NILE VIRUS GMUS-PD-0775 MM	<b>Zombie Virus</b> PITHOVIRUS SIBERICUM GMUS-PD-0850				

# GIANTmicrobes

## Store Displays



### Counter Display with Starter Pack

Includes 48 pieces and counter display

DISPLAY: GMUS-DIS-0010  
PACK: GMUS-PK-0225



### Floor Display

Holds 160 pieces with choice of pack - Best Sellers & Wild Ones

DISPLAY: GMUS-DIS-0020  
BEST SELLERS PACK: GMUS-PK-0460  
WILD ONES PACK: GMUS-PK-0455



### Keychain Display

Holds 64 keychains with choice of pack - Best Sellers & Wild Ones

BEST SELLERS PACK: GMUS-PK-0400  
WILD ONES PACK: GMUS-PK-0405

## GIANTmicrobes Offices

Giantmicrobes, Inc  
78 Harvard Ave.  
Suite 300  
Stamford, CT 06902  
(877) 642-7623  
sales@giantmicrobes.com

Giantmicrobes UK Limited  
Chene Court, Poundwell Street  
Modbury, Devon PL21 0RQ  
United Kingdom  
+44 (0) 1548 831 070  
UKinfo@giantmicrobes.com

Giantmicrobes Germany  
Gaußstr. 2  
76131 Karlsruhe  
Germany  
Fax: 02561 - 959449930  
DEinfo@giantmicrobes.com

Giantmicrobes Canada  
620 McMurray Rd  
Waterloo, ON N2V 2E7  
Canada  
(866) 747-4191  
CAinfo@giantmicrobes.com

Giantmicrobes Australasia  
26 Garema Circuit  
Kingsgrove NSW 2208  
Australia  
+61 2 9740 3092  
AUinfo@giantmicrobes.com



**GIANT  
microbes**

...a million times  
actual size!