



Laser Texturing & Engraving

# FIREARMS

SINCE 1976

## Who is **SPE**?

Since 1976, St. Paul Engraving has set the standard in precision laser texturing and engraving for firearm manufacturing. Our advanced technology ensures unmatched accuracy, durability, and detailed designs. Our latest technology helps us to elevate mold designs and deliver superior results that exceed industry expectations.

### Flexipulse + Femtosecond Capabilities

- **Sharper geometries and intricate details:** Perfect for branding marks, optical patterns, and functional grip textures.
- **Minimizing thermal impact:** Ensures cleaner cuts without warping or damage to sensitive components.

### Automation

- **24/7 Operation Capabilities:** Ensures uniformity across all molds, reducing errors and accelerating production timelines.
- **Cost-Effective Scalability:** Streamlined processes allow for high-volume manufacturing & unmatched lead times.

### Advanced Laser Technology

- **Can reduce machining times** by up to 40%
- **Dynamic beam adjustment:** The laser matches the mold's contour without moving axis.
- **Streamlined production:** Fewer machine positions and larger patch sizes result in faster machine time and short lead times.
- **Flawless surface finishes:** Minimizes burr, recast, and microfractures for clean, functional designs.
- **Unparalleled versatility:** Ideal for engraving deep cavities or intricate mold designs in firearm components.

Visit our website





ST. PAUL ENGRAVING

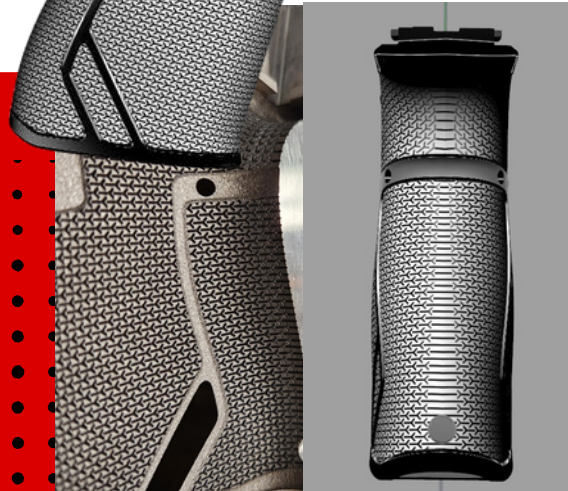
*Connecting Craftsmanship through Innovation*

## FUNCTIONAL GRIP TECHNOLOGY



**Precision Redefined. Performance Delivered.**

*Our advanced capabilities empower you to achieve unmatched precision, aesthetics, and functionality in every project.*



### LASER OVER EDM

Laser texture can be applied directly over EDM surfaces, eliminating the need for polishing prior to texture (pattern dependent).

### CUSTOM PATTERNS

5 axis laser technology unlocks the ability to deliver on complex customized patterns, previously unattainable.

### SHARPER GEOMETRIES, FINER LINES

With our latest technology & advancements, we can attain unparalleled sharpness and detail, ensuring that even the most intricate patterns are executed flawlessly.



### OPTIMAL MOLD PERFORMANCE

- Directional Grip: Control texture flow for specific handling needs.
- Add/Remove/Blend Features: Fine-tune textures to meet exacting functional requirements.
- Enhanced Mold Function: Improve part release, reduce friction, and optimize mold utility.
- Ability to laser texture molds partially assembled.

### AESTHETIC TEXTURING

- Hide Imperfections: Conceal blemishes or inconsistencies in the mold surface.
- Enhanced Appearance: Tailor the sheen to match your design intent, from matte to glossy finishes.
- Distinctive Patterns: Elevate the visual appeal with textures that set your products apart.



WWW.STPAULENGRAVING.COM

(651) 462 9356

INFO@STPAULENGRAVING.COM