

Realistic 3-D S.W.A.T. Targets

Take your firearms training to a whole new level with our Realistic 3-D SWAT Targets

Our Life sized 3-Dimensional design makes these SWAT targets ideal for realistic room entry, sniper training and "Shoot, No Shoot" judgment scenarios. These targets emphasize realistic detail of facial features, hair, clothing, coloration: all the essentials of their "living" counter parts.

Our 3-D SWAT Targets allow you to take shots at a 30 or 45 degree angle from either side, as well as straight on, creating a more realistic training scenario.

These 3-D targets are known to endure 5,000 to 10,000 "live" rounds!

SWAT Tactical Targets can be purchased with or without a "reactionary block" in the head and chest which represents a "kill zone". When shots hit the zone, the targets "react" by falling over, representing a critical hit. (Reactionary stand required for reactionary models). Add clothing for further realism.

Our 3-D SWAT Targets can also be purchased with a variety of interchangeable Lethal or Non-Lethal Props to create "Shoot-No Shoot" judgment training.



Moe



Ross



Sal



Bud

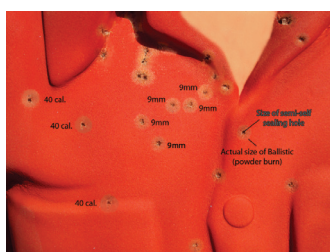


Sylvia



Molly

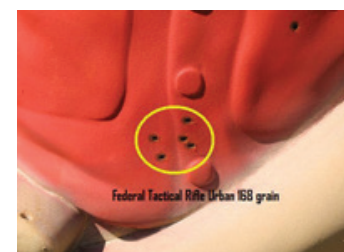
As you can see with our self-sealing polyurethane formula, our SWAT Targets can endure 5,000 - 10,000 "live" 9mm, .40, and .45 cal. ball rounds as well as high-powered .223 and .308 rounds.



9mm and 40 cal.



.223 rounds



308 rounds



Lethal/Non-Lethal Props



Tac-Fill Putty



Static Stand



Reactive Stand