

UPHOLSTERY PRODUCT INFORMATION SHEET

TALAVERA

INSPIRATION

The Arc-Com Design Studio delivers a dynamic, multi-colored geometric with the addition of pattern Talavera.

Pattern Talavera finds its inspiration in the ornately patterned, hand painted Spanish and Mexican clay tiles. Talavera tiles originate from the Spanish city of Talavera de la Reina. Talavera de la Reina was home to many potters and the intricate graphic designs of the tiles come from the Arabic-Andalusian influence in ninth century Spain.

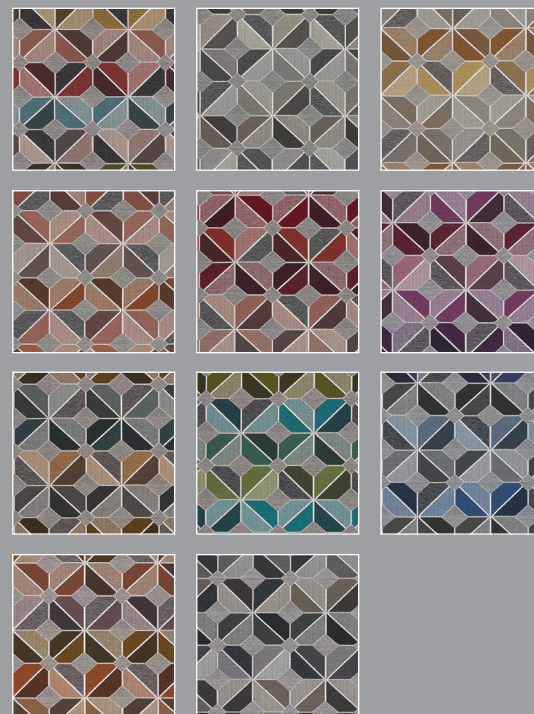
Spanish potters migrated to Puebla, Mexico in the 16th century and Talavera de la Reina's style of Talavera tiles became well known in Puebla. Talavera tile factories became prevalent throughout Mexico in the 18th century. Today Puebla is still home to traditional pottery workshops that craft traditional Talavera tiles.

Pattern Talavera modernizes the classic Spanish/Mexican-influenced geometry through the use of innovative weave structure and color. A crisp outline frames the motifs. The color within is placed strategically to deliver combinations that both attract and delight. The creative combination of lustrous, matte and heathered yarns adds a tremendous amount of surface interest to this textile.

Amazingly, as a result of extensive yarn sourcing by our design studio, this textile has been engineered to be compatible with bleach! The ability to be cleaned and disinfected with bleach, combined with a superior stain resistant finish and a 125,000 DR abrasion result, allows pattern Talavera to be used in virtually any interior setting!

The 11-sku color palette addresses a multitude of market segments. Sophisticated neutrals, blue greens, a modern purple, a masculine navy and a bright primary are all included.

COLOR STORY



PATTERN INFO



Repeat:	H: 14" x V: 17 1/2"
Weight:	24 oz.
Content:	85% Polyester, 15% Acrylic
Finish/Backing:	Stain Resistant Finish, Acrylic Backing
AC#:	63800 - 63810
Skus:	11
US\$:	100 yds+: \$79.95
	1 - 100 yds: \$73.95

ENVIRONMENT

- Flame Retardant Free
- Antimicrobial Free | Antibacterial Free
- Non-PFOA, Non-PFOS Water Repellant Technology

TESTING

This fabric has passed:

Flammability: California Bulletin #117-13; UFAC: Class 1/NFPA 260

Abrasion: 125,000 double rubs (Wyzenbeek Method)

Lightfastness: 40 hours

CLEANING CODE: WS

Can be cleaned using 10% bleach / 90% water solution.