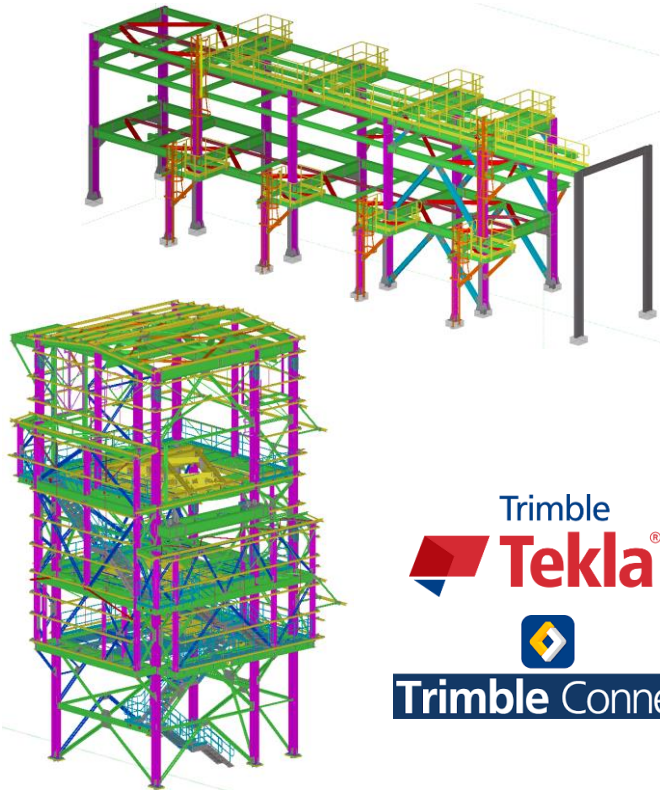




Steel Detailing

Steel Detailing Services



DETAILING GUIDELINES

- ✓ AISC
- ✓ ASI
- ✓ Safe Work Australia
- ✓ CISC
- ✓ OSHA
- ✓ NISD
- ✓ AWS
- ✓ NAAMM

STEEL DETAILING

- ✓ Estimate Modeling
- ✓ Structural Model Framing
- ✓ Material Take-off (ABM)
- ✓ Anchor/Embed Drawings
- ✓ Shop/Erection Drawings
- ✓ CNC & DXF files
- ✓ Shop/Field bolt list
- ✓ Fabtrol Reports
- ✓ STRUmis file for Material management
- ✓ Zeman files for Robotic manufacturing
- ✓ 3D IFC, DWG, BIMsight Model, etc.

Tekla Outputs

- ✓ Advance Bill of Material i.e., Material take-off
- ✓ Embed Plans.
- ✓ Erection & Section Drawings.
- ✓ Shop Fabrication Drawing.
- ✓ Bill of Material reports.
- ✓ CNC & DXF files in various formats.
- ✓ Fabtrol reports for material management software's.
- ✓ Zeman files for Robotic Manufacturing of Steel.
- ✓ STRUmis files for Material management.

Co-Ordination with other trades

Steel structures consist of numerous elements apart from steel and below are some of the trades which plays vital role in detailing of steel structure.

- ✓ Joist framing.
- ✓ Deck layout Drawings.
- ✓ Mechanical (MEP).
- ✓ IFC, BIM, Design Model, etc.
- ✓ Facade Panels.
- ✓ Precast Panels.
- ✓ Civil/Landscape Drawings.
- ✓ Grating Supplier.

Detailing process

Below noted are some guidelines/regulations which are developed by the societies like AISC/CISC/BS/OSHA, etc. also the Structures developed should be in compliance with noted below.

- ✓ AISC - American institute of Steel Construction.
- ✓ ASI – Australian Steel Institute
- ✓ Safe Work Australia
- ✓ CISC – Canadian Institute of Steel Construction.
- ✓ OSHA – Occupational Safety and Health Administration.
- ✓ NISD – National Institute of Steel Detailing.
- ✓ PIP – Process Industry Practices.
- ✓ NAAMM – The National Association of Architectural Metal Manufacturers.

Industrial Segment



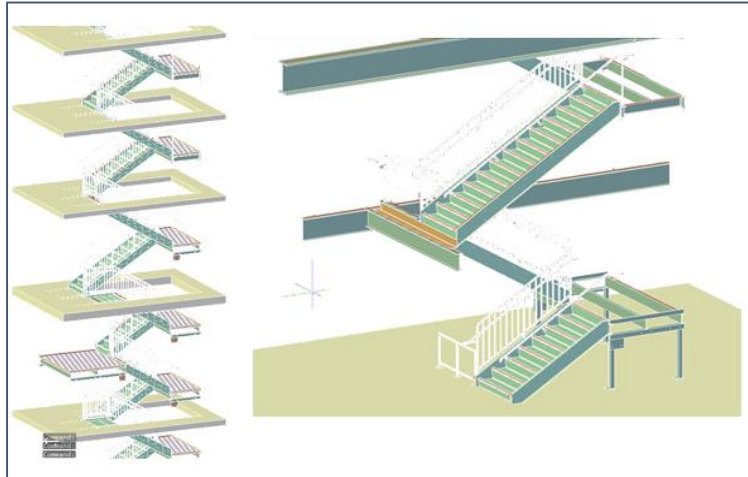
- ✓ Process Plants (Oil, Cement, Chemical, Steel).
- ✓ Pipe Rack Structures.
- ✓ Industrial operation floors.
- ✓ Oil & Gas (Onshore/Offshore).
- ✓ Bridges. (Skywalks, Vehicle Crossings, Canals, etc)
- ✓ Gantry Frames.

Commercial Segment



- ✓ High Schools & Elementary Schools.
- ✓ Shopping Malls.
- ✓ Hospital Structures. (Seismic/Non Seismic)
- ✓ Stadiums.
- ✓ High Rise Structures.
- ✓ Train/Metro Stations.

Miscellaneous Segment



- ✓ Metal Stairs and associated railings.
- ✓ Customized Stairs & associated railings.
- ✓ All Types of Railings.
- ✓ Aesthetic Lobby Stairs.
- ✓ Glass and Cable rails.
- ✓ Ladders & Ship Ladders.
- ✓ Gates & Louvers.
- ✓ Fireproof Structures and Gratings.
- ✓ Checkered Plate Platforms.
- ✓ Retrofit/Renovation Structures.

THANK YOU