



Leading provider of computer aided  
design and drafting solutions  
to the Global Architecture industry

Phone: (415) 738 - 0642  
Website: [www.eLogicTech.com](http://www.eLogicTech.com)  
email: [sales@eLogicTech.com](mailto:sales@eLogicTech.com)

GLOBAL  
ARCHITECTURE  
PARTNERS



## ABOUT US

eLogicTech Solution is a global BIM consulting services company providing quality and cost effective architectural production services (APS) to the worldwide AEC community. eLogicTech Solutions was incorporated in 1999 in India, 2001 in USA and 2018 in Australia. With its headquarters in San Francisco, California, eLogicTech maintains its architecture and engineering studio in Hyderabad, India while working with clients in USA, Canada, Europe, Australia and New Zealand.

eLogicTech offers a full range of architectural services, both quality-controlled and deadline-sensitive to meet the international industry standards. eLogicTech has rich and varied experience having worked on several international projects from simple blue line conversions to complex design development and construction documentation for large corporate buildings, health care, residential, leisure, hospitality, critical facilities and historic conservation.

eLogicTech also specializes in Technical Design Evaluations, Code Compliance Analysis, Project/ CADD Standardization Processes, Specifications Writing, Building Information Modeling System (BIMS), Energy Modeling, Point Cloud conversion, Daylight Analysis, 4D / 5D Simulation, Clash Analysis, BOQ, As Built and Facilities Management

Our team of experienced Architects and Engineers strive to deliver punctual and high quality solutions, enabling clients to meet their business requirements and objectives eLogicTech's clients range from mid-sized Architecture and Engineering firms to some of the Fortune 500 companies.

eLogicTech is in essence an extension of its clients' design studios. The efficiency of its virtual project management makes it an integral business collaborator for its clients.

CONSTRUCTION DOCUMENTATION PARTNER

[www.elogictech.com](http://www.elogictech.com)





# DEDICATED VIRTUAL STUDIO

## TECHNICAL DESIGN REVIEW

- Code review
- Compliance check according to client's specifications
- Value engineering by checking coordination of map drawings with architectural sets.

## FORMULATING SPECIFICATIONS

- Specification writing for clients transitioning from Master Format 1995 to Master Format 2010.
- Specifications writing using Master Format 2010.

## CAD SYSTEM AND STANDARD DEVELOPMENT

- Creating CADD Standards following National Cad Standards Version 6
- Developing CADD libraries customized to clients' Cad standards or NCS V6
- Layer management and standardization customized to clients' requirements or NCS V6

# ARCHITECTURE

## ARCHITECTURAL DESIGN

- As-built drawings
- Schematic design drawings
- Design development drawings
- Approval and permit drawings
- Construction documentation
- Raster image conversion
- Millwork & shop drawings

## VISUALIZATION

- Wire frame block modeling (conceptual aid)
- Exterior and Interior Renderings
- Interior detailed modeling
- Construction sequencing animation
- Site logistics and erection sequence simulation
- Interactive interior panoramic views
- Walk through & fly-by animations

# MEP ENGINEERING

## MECHANICAL

Detail design, modeling and drafting for:

- Ventilation layout, equipment general arrangement drawings, sections and enlarged plans.
- HVAC systems- supply, return, exhaust, fresh air and smoke
- Modelling and coordination of mechanical rooms like chiller, pump rooms and AHU rooms.
- Schematic drawings and air flow diagrams.
- Shop drawings.
- As built drawings/ modelling.

## ELECTRICAL

Detail design, modeling and drafting for:

- Power layout, lighting layout and ELV layout.
- False ceiling co-ordination for Electrical and ELV Services for electrical rooms and control rooms.
- Standard details for electrical and ELV services installation following national electrical standard code.
- Interior design development of data and power devices.

## PLUMBING

Detail design, modeling and drafting for:

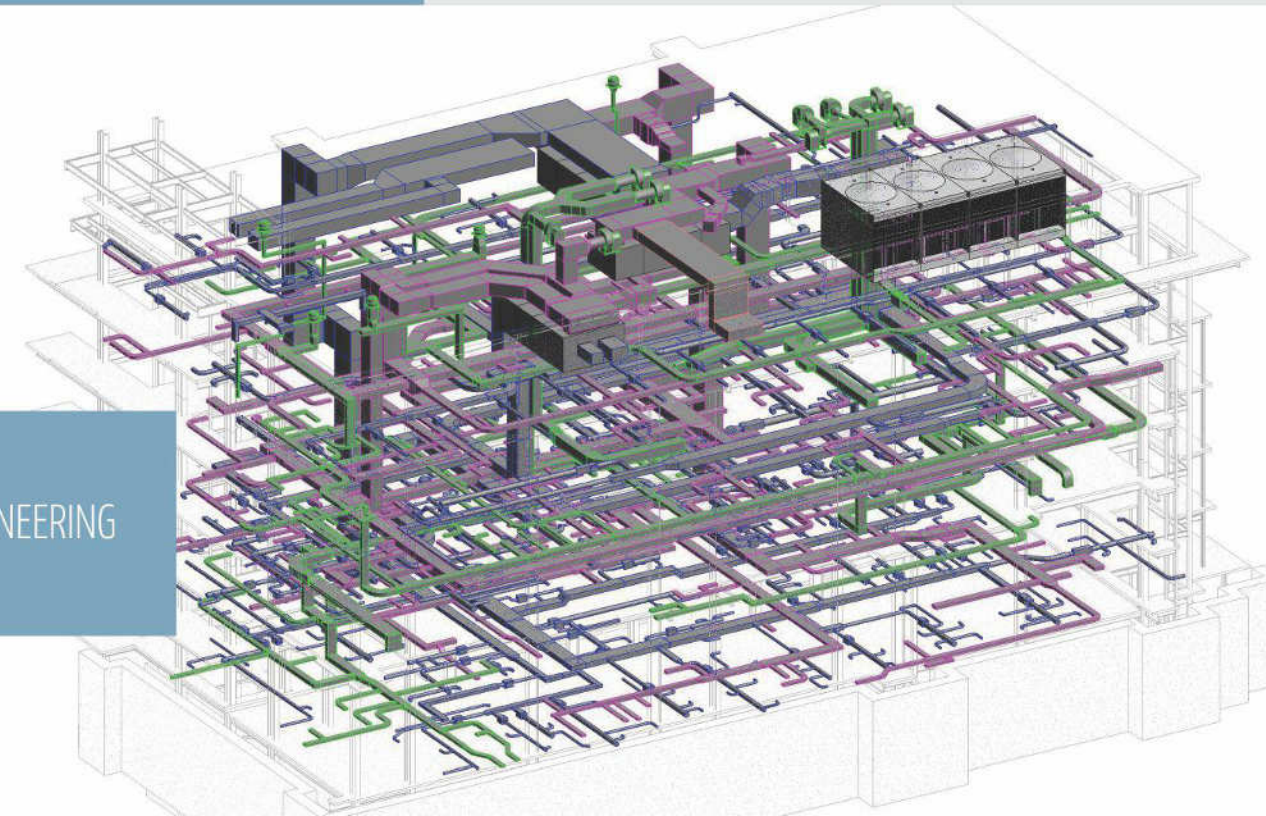
- Plumbing plans- water supply and waste water.
- Plumbing systems- water and gas
- Gas supply layout
- Fire protection layout
- Fire pump rooms
- Standard details, riser diagrams and schedules
- Isometrics of piping drawings ( P & Ids)

## COMBINED SERVICES DRAWINGS (CSD)

- Drawings, section, details.
- Mechanical room plans

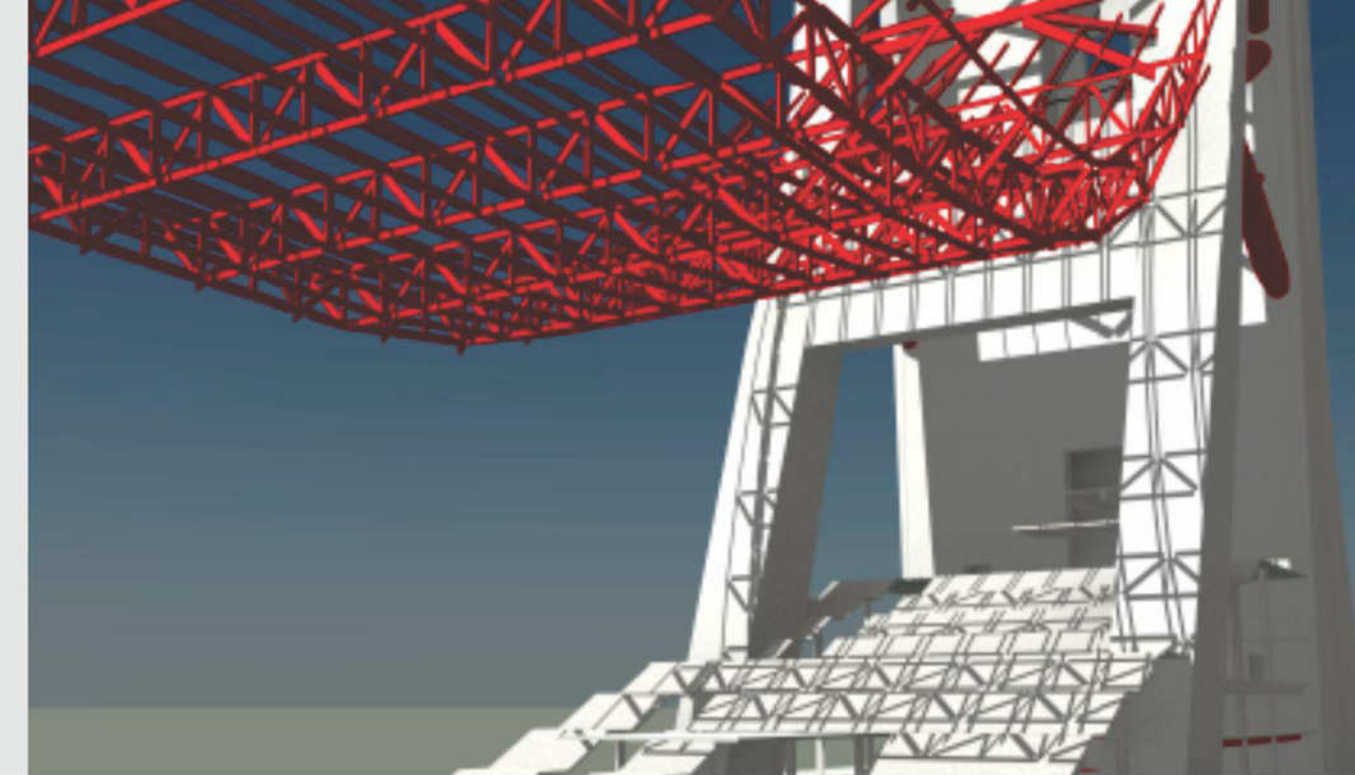
COORDINATION  
MADE  
EASY

MEP | ENGINEERING



## STRUCTURAL ENGINEERING

- Structural modeling and documentation
- Construction Documentation
- Schematic layout diagrams
- Framing plans and elevations,
- Reinforcement plans
- Column, footing, truss schedules
- Standard Structural details
- Steel Detailing / shop drawings
- Rebar Detailing
- Fabrication Drawings
- Reinforcement Concrete Detailing



# BUILDING INFORMATION MODELING SERVICES

eLogicTech offers services to clients implementing Building Information Modeling platform that lays the ground work for a cost effective and achievable, performance-based design practice.

## NEXT LEVEL OF COLLABORATION



- Full spectrum of services – from conceptual massing studies through CD Set
- BIM models at desired level of detail (LOD 100 to 500)
- Client inputs comprise – point clouds, CAD files, paper scans, photographs, sketches
- As-built conditions models
- Mass modeling for conceptual study
- Pre-Design spatial program studies
- Solar Studies
- Schematic, Detailed Design models
- Detailed Design documentation
- Construction documentation
- Visualization – Orthographic, Perspective views and Walkthroughs
- CAD to BIM transition assistance
- Custom parametric family creation
- Clash Analysis
- BOQ / Material Takeoffs
- Facilities management
- 4D / 5D Simulation and Sequencing

BETTER  
THAN  
REAL

VIRTUAL | REALITY



- Panoramic Virtual Reality Views
- Virtual Reality integration with BIM
- Virtual Reality Product tours

## VIRTUAL REALITY SERVICES

- VIRTUAL REALITY**
- 360 degree Virtual Reality tours
  - Augmented Virtual Reality services
  - Virtual Reality Walkthroughs





FURNITURE | PRODUCT MODELING

# SERVICES WE OFFER

- 3D Furniture modeling
- 3D Product Modeling
- Residential Furniture Modeling
- Office Furniture Modeling
- 360 Product Animations
- Scene Renders of the furniture
- Modeling for Augmented Reality Apps.
- Modeling for Virtual Reality Apps.
- Furniture installation videos.



FURNITURE / PRODUCT MODELING



# STRUCTURAL STEEL DETAILING

eLogicTech provides structural steel Modeling & Detailing services for the desired output of Shop and Erection Drawings.

The success of a large-scale Structural Steel project depends on an information-laced developed 3D model. The model is the basis of the final shop drawings, erection plans, erection details, field bolt lists, CNC inputs & FABtrol Reports.

## ELOGICTECH'S KEY SERVICES

### INCLUDE:

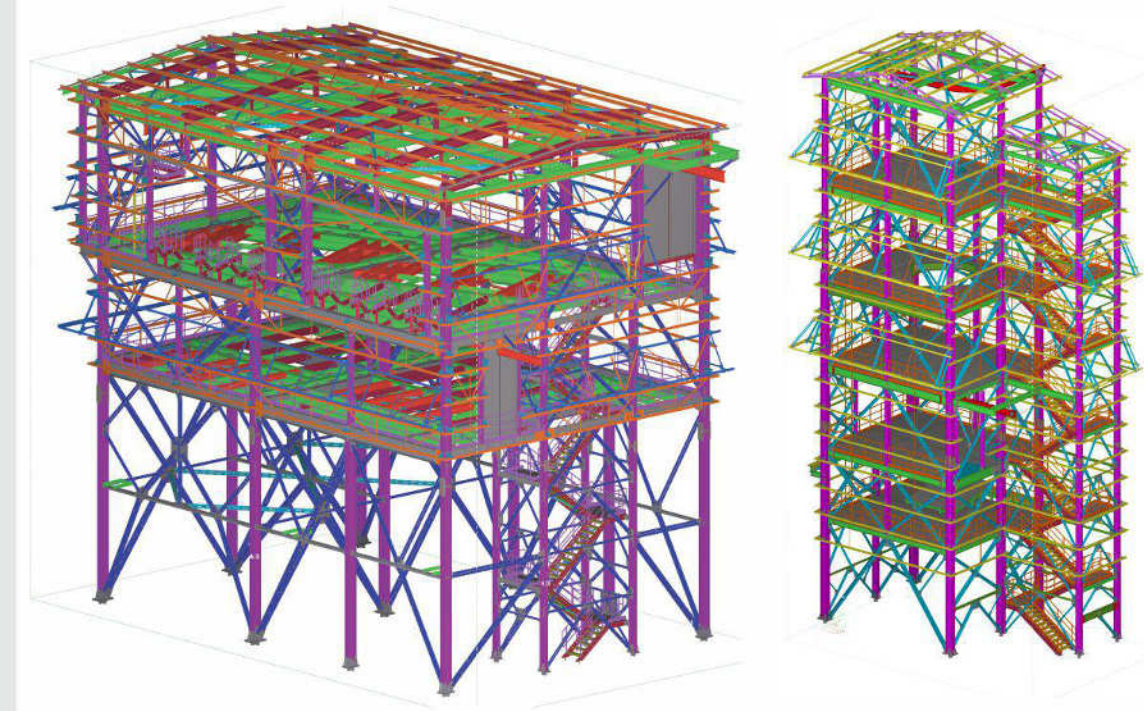
- Structural Model Creation
- 3D Estimation Model
- Structural Steel Detailing and Pre Detailing
- Advance Bill of Materials (MTO)
- Shop Detail and Erection Drawings
- As-Built Erection Details

## OUTPUT USING TEKLA STRUCTURES:

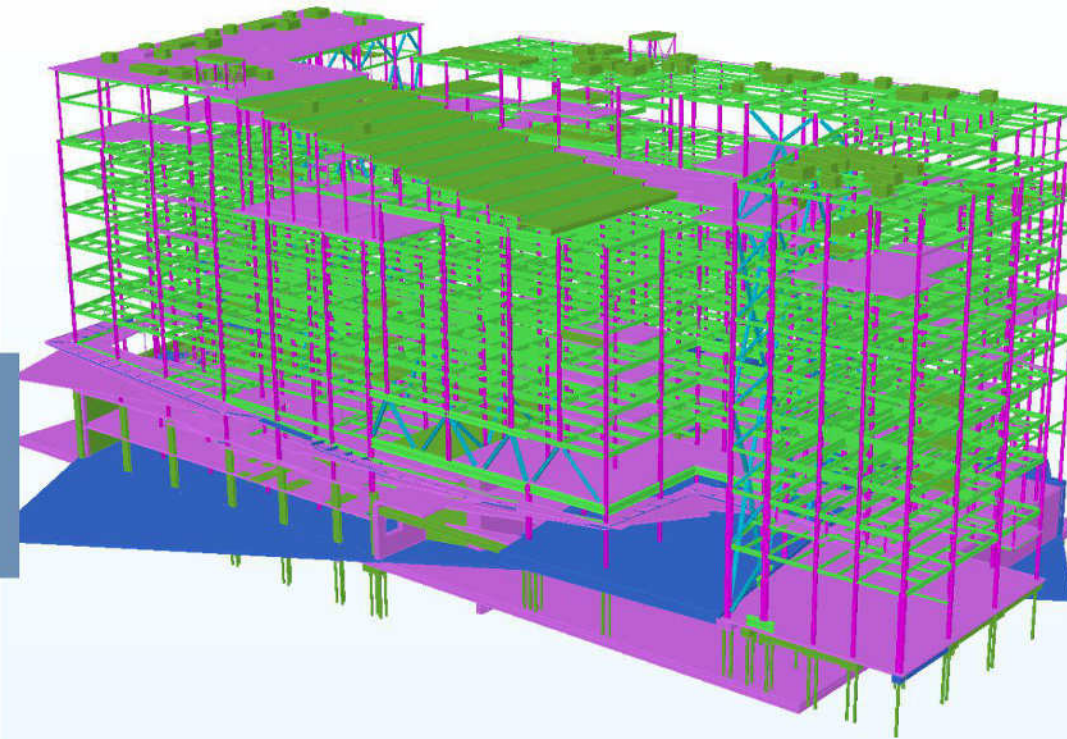
- Advance Bill of Materials (MTO)
- Embed and Lintel Drawings.
- Erection & Section Drawings.
- Shop Fabrication Drawings.
- Bill of Material Reports.
- CNC & DXF files in various formats.
- Fabtrol / StruMIS reports for material management software's.
- Customised Electronic files for Robotic manufacturing.

## SEGMENTS WE CATER TO:

- Industrial
- Commercial
- Pipe Rack
- Train & Metro Stations
- Miscellaneous Steel
- Renovation/Retrofit
- Buildings.
- Point Cloud / Laser Scanned Buildings



STEEL DETAILING

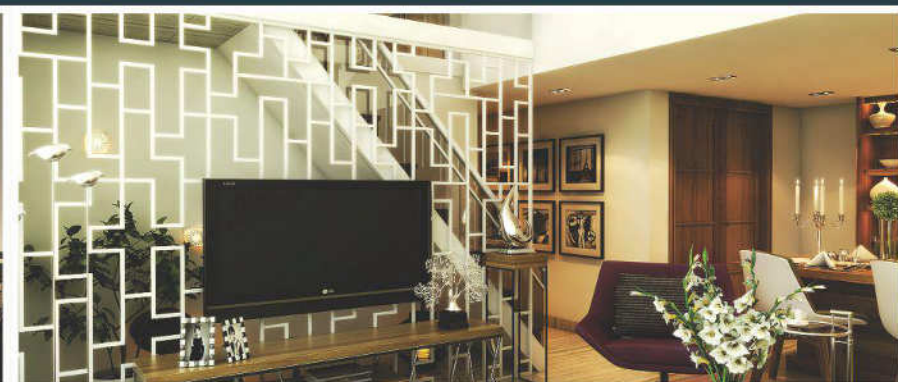


## GUIDELINES FOR DETAILING PROCESS:

- ASI - Australian Steel Institute.
- Safe Work Australia.
- AISC - American Institute of Steel Construction.
- CISC – Canadian Institute of Steel Construction.
- OSHA – Occupational Safety and Health Administration.
- NISD – National Institute of Steel Detailing.
- BS - British Standards.

Technologies Used (Tekla, SDS/2, & Autodesk Advance Steel, etc.)





EXTERIORS

3D

INTERIORS

Project : Hotel  
 Start Date : Oct 2015  
 End Date : Sept 2016  
 Team Size : 4  
 Built up area : 227,524 sft  
 Location : Texas USA

Project : Senior Living  
 Start Date : Jan 2016  
 End Date : Ongoing  
 Team Size : 4  
 Built up area : 276,515 sft  
 Location : Texas USA

ARCHITECTURE  
 IS A  
 VISUAL  
 ART

ARCHITECTURAL



ARCHITECTURAL

Project : Parcel 'O' Victoria Hill  
 Start Date : March 2013  
 End Date : Dec 2016  
 Team Size : 4  
 Built up Area : 133,223 sft  
 Location : Canada

eLogicTech created the 3D model and drawings of the project from design development stage to complete construction documentation.

This is a residential building with 5 levels consisting of outdoor and indoor recreation spaces, kitchen and banquet hall on level one and top floors consist of apartments. eLogicTech developed the design by adhering to Canadian city bye laws.

eLogicTech created a BIM model of this hotel building of 8 floors.

It is of composite construction, which has structural columns in the lower level and load bearing walls on the upper levels. The hotel building has lobby, restaurants, bars, office spaces, banquets, ball rooms and kitchen on level one. Guest rooms are located on upper levels. During the process of Architectural modeling, eLogicTech coordinated the Structural and Architectural design and provided clash detection report. Additionally, complete construction documentation was developed by eLogicTech

eLogicTech assisted the client in developing the Architectural BIM model and construction documentation set.

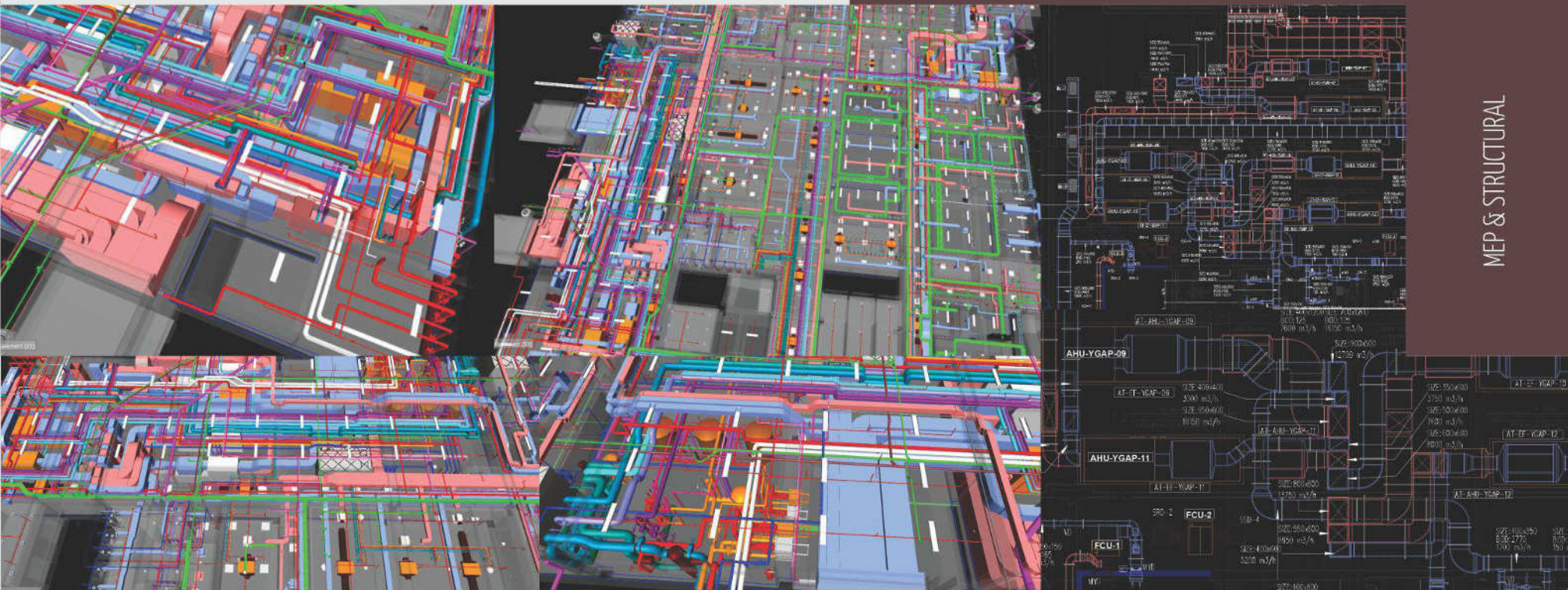
This senior living building consists of 5 levels. Level one consists of parking, administration offices, kitchen, recreation, central courtyard and pool. The structure comprises of wooden framing and wooden load bearing walls. The design underwent three rounds of modifications. The challenge was to revise the floor plan by modifying the wall construction to include air gaps plus different finishes without affecting the room and corridor dimensions. eLogicTech developed a Revit family of Spanish clay tiles instead of the conventional hatch pattern to depict roof tiles in 3d.



# MEP & STRUCTURAL

elogictech scope was to develop BIM model, Shop drawings and Clash detection using Navisworks. eLogicTech developed BIM model of Mechanical, Electrical, Plumbing and Firefighting systems for this healthcare project. The hospital complex consists of 2 main blocks and a security building. Both the blocks have 3 floors each. Shop drawings were prepared from CAD drawings exported from BIM model. They included Individual Service Drawings (ISD) and Combined Service Drawings (CSD). eLogic developed the BIM model and Shop drawings from LOD 300 to LOD 500. About 5000 clashes were resolved using Navisworks. Major challenge was working on the Chiller, AHU rooms, 5 pump rooms and electrical rooms.

Project : Hospital  
Start Date : May 2017  
End Date : Oct 2017  
Team Size : 7  
Built up area : 242,100 sft  
Location : Turkey



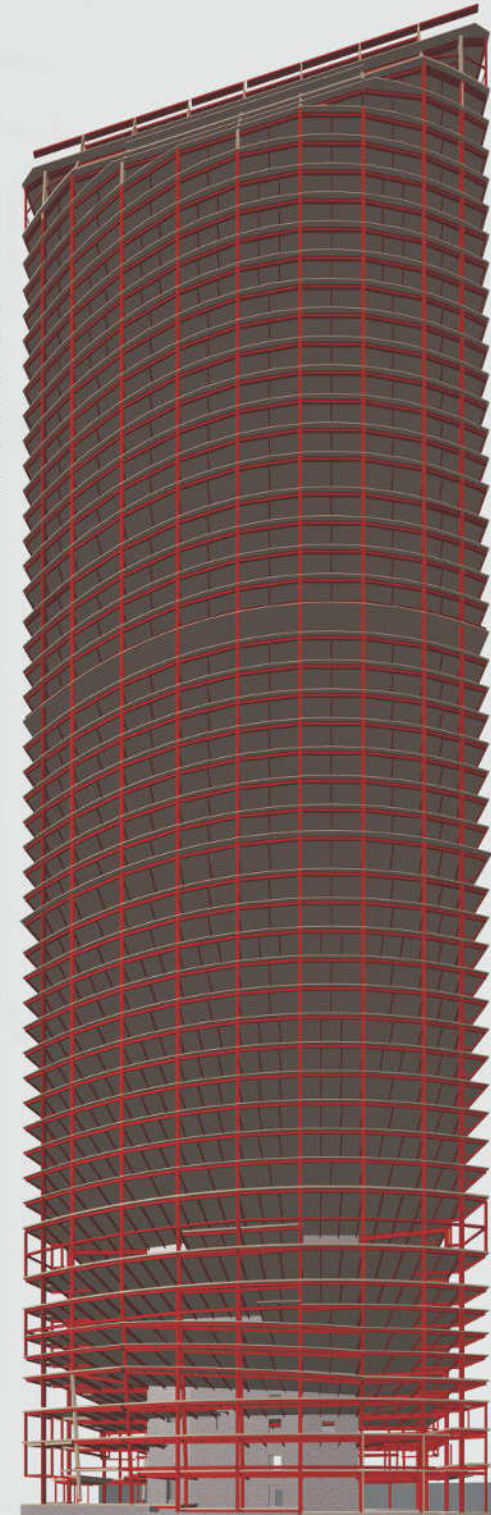
MEP & STRUCTURAL

Project : Commercial  
Start Date : Oct 2013  
End Date : Mar 2014  
Team Size : 4  
Built up area : 1,000,000 sft  
Location : Illinois, USA

River Point has set the standard for ultramodern office space in Chicago. The 52 story office tower is ideally located in Chicago's downtown West Loop on the edge of the Chicago River. Featuring a 1.5 acre plaza and river walk, an advanced fitness center and a formal restaurant, River Point has created unparalleled work space in Chicago. eLogicTech's scope was developing & documenting the structural model by coordinating with Architectural service.

Project : Mixed use development  
Start Date : Sep 2013  
End Date : Apr 2014  
Team Size : 4  
Built up area : 3,670,000 sft  
Location : Singapore

A high-density, mixed-use building complex in the heart of Singapore financial district, complements the Urban Redevelopment Authority's (URA) vision of making Singapore a "City in a Garden". Singapore's new Landmark has recently topped out and will be completed at the beginning of 2017. eLogic's scope was modeling of structural components by coordinating with Architectural & MEP services.



# ABOUT TEAM

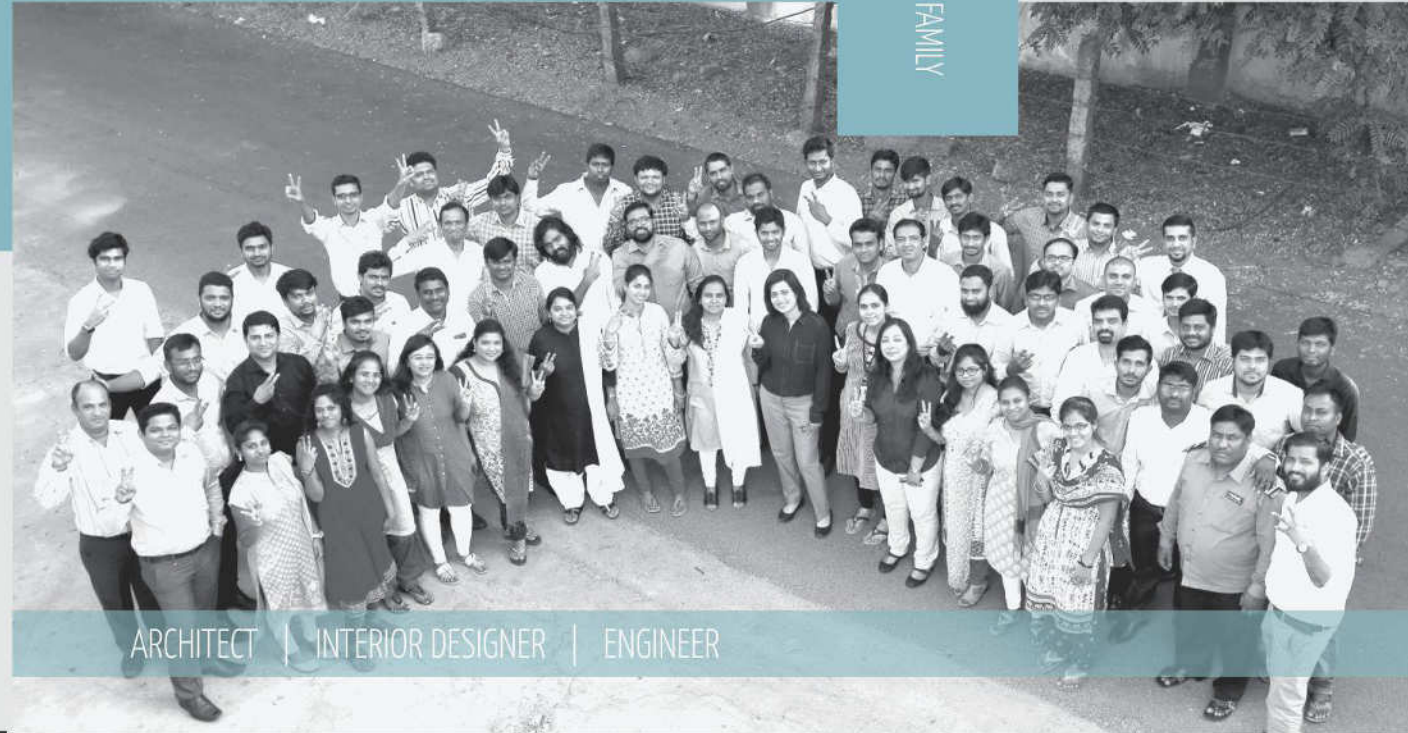
Each member of eLogicTech is an important part of the corporate family, essential for its success. Our employees are selectively chosen and handpicked from the best architecture schools worldwide. Many bring with them the valuable experience of working with some of the most well-known architectural houses in India and abroad. The new recruits undergo a rigorous and comprehensive training program which has been designed keeping international construction technologies and documentation standards in mind.

Each team is led by a Project Manager who is responsible for successful and timely execution of every project and effective communication with clients. The project manager is the sole point of contact between client and eLogicTech team. Project Coordinator manages the overall quality control for each assigned project. They receive additional support of Architects and Engineers who are qualified professionals with diverse technical skills.

eLogicTech team consists of experienced Architects / Engineers with B. Arch / B.E. or M. Arch / M.E degree and having advanced knowledge of various documentation and visualization software platforms. The team also undergoes a continuous evaluation and training process to help them improve their skills in communication, management and planning towards successful completion of every project.

## ESSENTIAL TRAITS AND SKILLS FOR FUTURE SUCCESS

CORPORATE | FAMILY



## OUR PROJECT TEAM

ARCHITECT | INTERIOR DESIGNER | ENGINEER

### CLIENT'S ONE POINT CONTACT

- Experienced Architect with strong technical skills
- Excellent written and oral communication skills
- Leadership and motivational skills
- Proficient in latest software
- Trained in North American construction technology

Project Manager

### QUALITY CONTROL LEAD

- Experienced Architect with strong technical skills
- Trained in quality control processes
- Proficient in latest software
- Trained in North American construction technology

Project Coordinator





**eLogicTech Solutions, LLC**

229 Brannan St. Unit 4J,  
San Francisco, CA 94107-4046

**United States**

Ph: +1 415 531 3888  
+1 415 738 0642

**eLogic Solutions Pty Ltd**

Unit 20, 22-30 Wallace Avenue  
Point Cook, VIC - 3030

**Australia**

Ph: +61 283 798 074

**eLogic Solutions India Pvt Ltd**

72 P&T Colony, Karkhana,  
Hyderabad- 500009. Telangana

**India**

Ph: +91 40 40218099