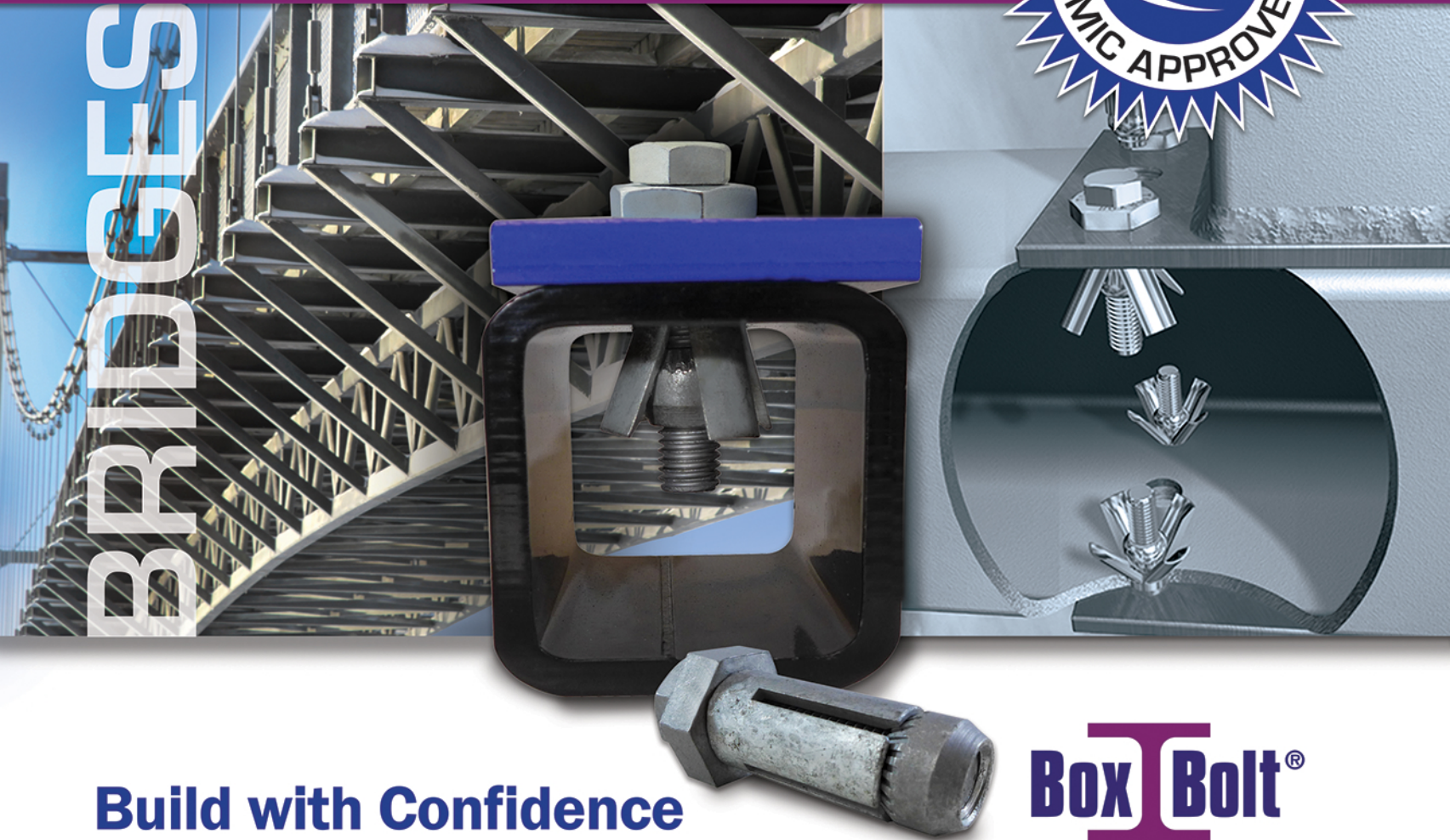


Seismic Solutions

Type C BoxBolt® Expansion Anchor
now ICC-ES Approved for Seismic
Design Categories A through F



Seismic Solutions



Build with Confidence

- Expansion Anchor for steel applications where access is limited to one side only
- Eliminates need for drilling/tapping, welding, strapping, through-bolting
- Installation requires only basic hand tools
- Hot-Dip Galvanized corrosion-resistant finish
- Suitable for rectangular, circular or square tube
- High tensile and shear values

Box Bolt®

A KEE SAFETY PRODUCT

LNA SOLUTIONS
A KEE SAFETY COMPANY

LNA Solutions, Inc.
3924A Varsity Drive
Ann Arbor, MI 48108
tel: (888) 724 2323
fax: (734) 677 2339
inquiries@LNAsolutions.com
www.LNAsolutions.com