



**LAPEYRE STAIR PRODUCT LINE**  
Continuously Elevating Standards

## Leave the stairs to the experts

Lapeyre Stair provides a complete outsource solution for stairs with in-house resources and over three decades of stair-specific experience

- ✓ Experienced estimators help you bid on more jobs so you can win more jobs
- ✓ Dedicated project management guides each phase of your project from beginning to end
- ✓ Knowledgeable designers and detailers model projects in Advance Steel to reduce errors and field-fitting issues
- ✓ Quality stairs manufactured by our state-of-the-art production facility located in New Orleans, Louisiana



**ELEVATED STANDARDS** PE Stamps and Calculations are available for all 50 states.





STEEL WELDED STAIRS

# Lapeyre Stair Products

## 4 Steel Welded Stairs

Decrease design time and prevent installation errors with turnkey components designed to meet applicable building codes. Standard product options are value-engineered to reduce costs and lead times. Custom options provide flexibility to meet specific project requirements.

## 6 Steel Bolted Stairs

Completely pre-engineered, cost-effective stairs that can be quoted in minutes over the phone. Modular design can be quickly assembled (and disassembled) on site without certified welders or expensive installation equipment. Available for both industrial and commercial applications.

## 8 Alternating Tread Stairs

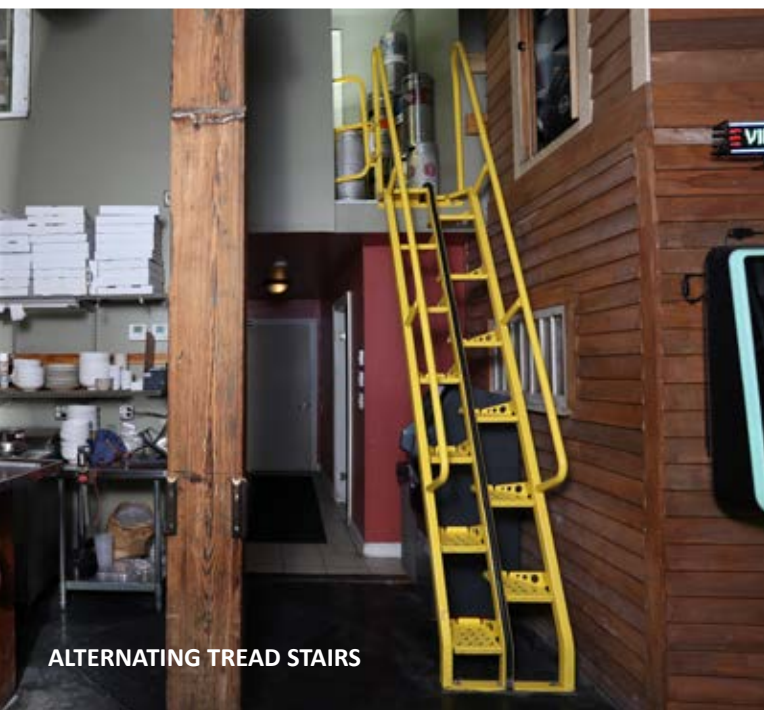
Ergonomic design allows forward-facing descent combined with more usable tread depth to provide increased safety over steep stairs and ladders when accessing tight spaces such as mezzanines, platforms, and rooftops. Custom-built to height from a choice of finishes and options.

## 10 Custom Systems

Incorporate platforms, legs, and bracing kits with stairs to create a clear path to safety. Design a custom solution to overcome specific challenges based on application, size, and material requirements. All of Lapeyre Stair's products are designed for easy integration into complete stair systems.



STEEL BOLTED STAIRS



ALTERNATING TREAD STAIRS



**ELEVATED STANDARDS** Additional product information, photo galleries, and quote request form are available online at [lapeyrestair.com](http://lapeyrestair.com).



## Steel Welded Stairs

Pre-engineered landing, stringer, tread, and rail components designed to meet applicable building codes that can be customized to meet specific project requirements.

### Benefits

- ✓ Efficient project quoting
- ✓ Reduced design time
- ✓ Timely arrival to job site
- ✓ Meet applicable building codes
- ✓ Quick and easy installation
- ✓ Prevent installation errors
- ✓ High-rise expertise
- ✓ Volume discounts available

### Applications

Steel welded stairs from Lapeyre Stair can be designed for either industrial or commercial applications providing a cost-effective solution that meets IBC and ADA code requirements.



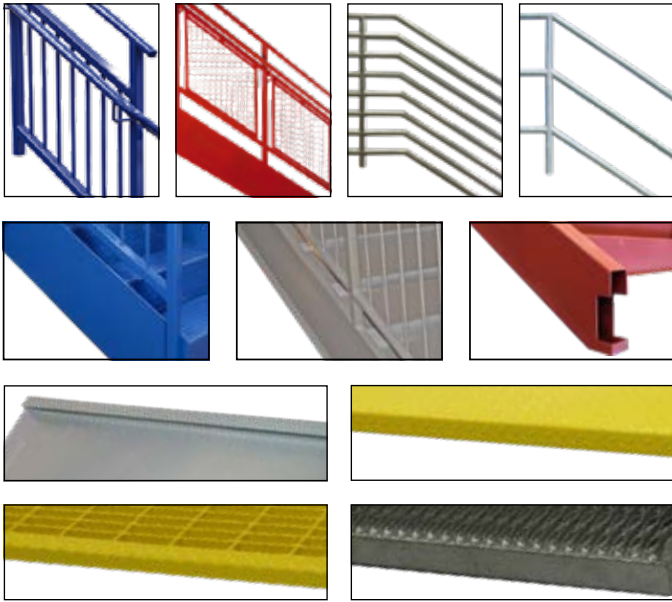
**ELEVATED STANDARDS** Guaranteed fabrication lead times mean each job arrives on site, on time, every time.







**ELEVATED STANDARDS** CNC manufacturing and proprietary tread fixtures reduce field alignment issues, improve efficiency of installation, and provide a more precise finished product.



## Options

Choose options from Lapeyre Stair's standard product line to reduce costs and lead times. Standard product line stairs are value-engineered to cost up to 20% less than stairs with custom options plus come with a money-back guarantee on fabrication lead times. A choice of standard rail, stringer, tread, and finish options are available to accommodate a variety of applications and design specifications.


Options from the standard product line can also be customized to meet specific design needs and project requirements. Possibilities include custom rail framing; custom handrails and grab rails; custom rail infills; custom tube and channel stringer sizes; anti-slip grip treads; and precast concrete treads. Lead times for custom options are determined on a case-by-case basis.

## Take the next step

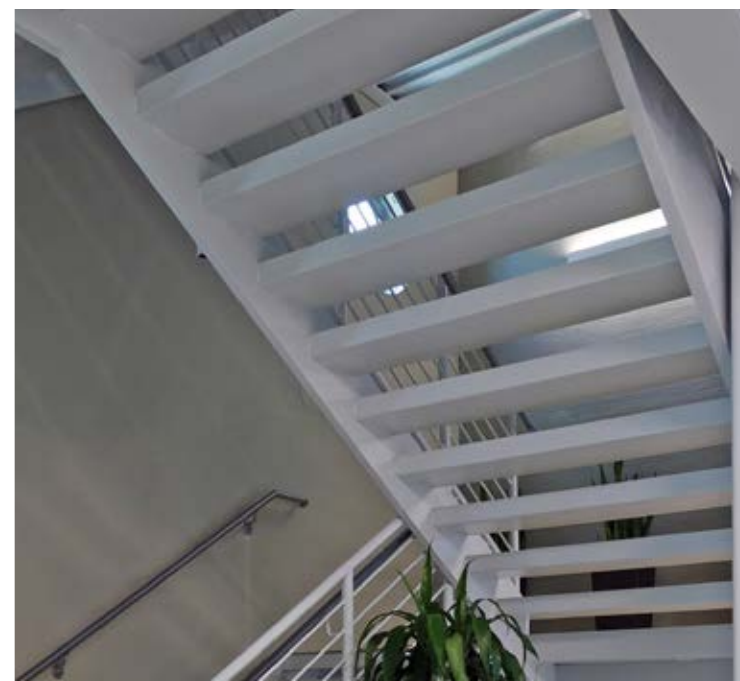
Contact us or visit our web site for more information on steel welded stairs.

 [lapeyrestair.com](http://lapeyrestair.com)

 [Ls.sales@lapeyrestair.com](mailto:Ls.sales@lapeyrestair.com)

 800-535-7631  
504-733-6009

- ✓ BIM model downloads
- ✓ CAD details and product specs
- ✓ Standard Product Line details
- ✓ Product photo gallery
- ✓ Sample pricing and quote request





## Steel Bolted Stairs

Lapeyre Stair's most cost-effective egress stairs are completely pre-engineered, do not require welding during installation, and can be quoted in minutes over the phone.

### Benefits

- ✓ Get pricing and approval shop drawings in minutes over the phone
- ✓ Lower design, fabrication, shipping, and assembly costs
- ✓ Simple on-site assembly, even in compact spaces
- ✓ Cost-effective solution for retrofits and renovations
- ✓ No welding or expensive equipment required for installation



### Industrial Applications

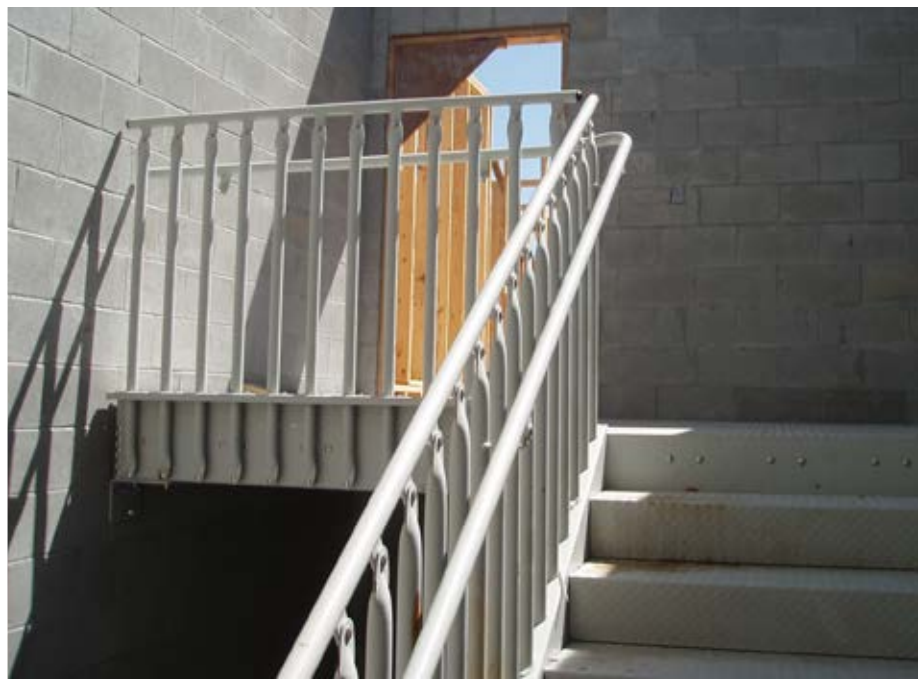
Models 01/02

- ✓ Industrial egress
- ✓ Industrial equipment access
- ✓ Mezzanine access
- ✓ Crossovers

### Commercial Applications

Models 03/04

- ✓ Commercial egress
- ✓ Accessible commercial egress
- ✓ Commercial residential egress







**ELEVATED STANDARDS** Easy-to-assemble, erection bolt design is a good fit for a number of project requirements, including no-weld industrial zones and tricky commercial retrofits.

## Industrial Options

Models 01/02 provide cost-effective solutions for a variety of industrial application. They can be quickly assembled and disassembled at job sites without certified welders. Model 01 is OSHA and BOCA compliant. Model 02 is OSHA compliant.

- ✓ Handrails and guardrails meet applicable code requirements
- ✓ Baluster spacing is adjustable within specified code
- ✓ Carbon steel treads in standard or custom widths
- ✓ Choice of diamond plate, concrete pan, grip, or bar grate treads
- ✓ Choice of hot-dip galvanized or powder coat finish
- ✓ Custom heights up to 144" (BOCA) and 240" (OSHA)
- ✓ Variable angles up to 50°

## Commercial Options

Models 03/04 are ideal for renovations or retrofits where assembly space is limited; self-installations where certified welders are not required; and exterior or free-standing stair towers. IBC and ADA compliant based on chosen options.

- ✓ Includes inside handrail to comply with IBC Industrial code
- ✓ Choice of full baluster or filler panel guardrail
- ✓ Carbon steel treads in standard or custom widths
- ✓ Choice of diamond plate, concrete pan, or smooth treads
- ✓ Choice of hot-dip galvanized or powder coat finish
- ✓ Custom heights up to 144"
- ✓ Variable angles based on height, width, and tread type



### Take the next step

Contact us or visit our web site for more information on steel bolted stairs.

📞 [lapeyrestair.com](http://lapeyrestair.com)

✉ [Ls.sales@lapeyrestair.com](mailto:Ls.sales@lapeyrestair.com)

☎ 800-535-7631  
504-733-6009

- ✓ BIM model downloads
- ✓ CAD details and product specs
- ✓ Code compliance
- ✓ Product photo gallery
- ✓ Quote request







# Alternating Tread Stairs

Get maximum safety in a minimal amount of space. Alternating tread stairs are an innovative, cost-effective alternative to steep stairs and ladders that provides safe access to tight spaces.

## Benefits

- ✓ Accommodate hard-to-reach spaces
- ✓ Forward-facing design to increase comfort of descent
- ✓ Smaller footprint than a traditional stair
- ✓ Cushioned central stringer to reduce risk of trips and falls

## Applications

**Carbon Steel alternating tread stairs** are the most popular and most often used model. Available in a powder coat finish for indoor applications or hot-dip galvanized finish for exterior applications.

- ✓ Roof access
- ✓ Equipment access
- ✓ Crossovers
- ✓ Mezzanines

**Stainless Steel alternating tread stairs** have an easy-to-clean finish ideal for the food and beverage industry or other applications with sterile environment requirements.

- ✓ Equipment access
- ✓ Crossovers

**Aluminum alternating tread stairs** are designed specifically to be used in locations where weight is an issue and are ideal for applications where corrosion is a concern.

- ✓ Roof crossovers
- ✓ Waste management
- ✓ Ships/marine environments








**ELEVATED STANDARDS** Optional safety gates provide an additional measure of safety for alternating tread stairs. They are precision fit, fully reversible, and allow for 180° travel.


## Options

Alternating tread stairs are available in a choice of carbon steel, stainless steel, and aluminum. Carbon and stainless steel stairs have a three-stringer design with treads welded to the stringers and ship with unattached handrails that bolt into place during installation. Aluminum stairs have a central stringer design with treads welded to the handrails and ship as one, complete piece. All stairs are custom-built to exact vertical height. Other available options are determined by choice of material.

	ANGLE OPTIONS		HANDRAIL OPTIONS			FINISH OPTIONS		
	56°	68°	Standard	Optional	Flush	Powder Coat	Galvanized	Natural
✓ <i>MOST POPULAR</i> Carbon Steel	✓	✓	✓	✓	✓	✓	✓	✓
✓ <i>EASY-TO-CLEAN</i> Stainless Steel	✓	✓	✓	✓	✓			✓
✓ <i>LIGHTWEIGHT</i> Aluminum		✓	✓	✓				✓



ROOF HATCH



INSIDE ACCESS

CHOICE OF COLOR:  
SAFETY YELLOW  
IRON/PRIMER GRAY  
CUSTOM COLORS

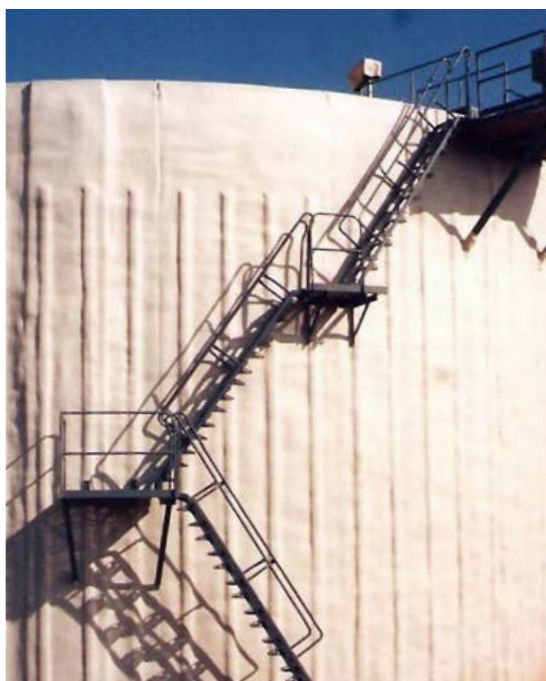
HOT-DIPPED  
GALVANIZED  
FOR OUTSIDE  
APPLICATIONS

## Take the next step at [lapeyrestair.com](http://lapeyrestair.com)

Visit our web site to buy alternating tread stairs online.

- ✓ Get a quote and buy online
- ✓ Generate 3D CAD model and dimensional prints
- ✓ Download BIM models, CAD details, and specs
- ✓ View product photo gallery

**Order Now**





# Custom Systems

Products engineered for integration. Combine platforms, legs, and bracing kits with any stair product to create a complete, custom system designed specifically to meet the needs of your unique application requirements.




**ELEVATED STANDARDS** Lapeyre Stair is equipped with extensive knowledge and experience to evaluate individual needs and design the ideal solution for highly specific access requirements.



# LAPEYRE STAIR

 [lapeyrestair.com](http://lapeyrestair.com)

 [Ls.sales@lapeyrestair.com](mailto:Ls.sales@lapeyrestair.com)

 800-535-7631  
504-733-6009