

# LaserMax

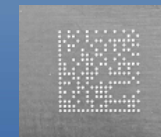
FULL VISION AUTO LASER BARCODE PRINTER



- CO<sub>2</sub>/YVO<sub>4</sub>(R/G) laser source
- > 25,000hrs long life time
- Low labor and maintenance cost
- 3-axis(X,Y,Z) laser marking
- Max. 510x510mm marking range
- Adjustable focal length (max. ±21mm)
- 80um min. cell size
- 1D/Data Matrix/QR/OCR/Pattern
- Particle collection mechanism design
- CCD Visual alignment
- Real-time barcode inspection
- Built-in flipper (SR series)
- Model selection:
  - B-300C/S-300C/SH-450C/SR-450C**
  - SH-510C/SR-510C**
  - YVO<sub>4</sub> by request**

# PiMax

FULL VISION AUTO INKJET BARCODE PRINTER



- Small form
- Non-stop ink/solvent replacement
- High capacity and accuracy
- Re-workable before reflow
- Hi-temp and scratch proof
- Easy head clean
- Applied in all kinds of material
- Wide working area (X:250mm, Y: 300~450mm)
- Real-time barcode inspection
- Vision alignment
- Z-axis adjustable
- Black and White ink model available

# LaserMax

# PiMax

	SH/SR series (-450C / -510C)	S/B series (-300C)
Laser spec	Laser head : Keyence CO <sub>2</sub> Laser module(10600nm, 30W, Class 4, IEC 60825-1)	
	Laser scan mode : XYZ 3 axis synchronous scan	
	Laser source/Working distance indicator : Semicon-laser(Class 2)	
	Basic working distance(±adjustable width) : 92mm ± 2mm	Basic working distance(±adjustable width) : 300(±21 mm)
	Marking speed : Max. 6000mm/sec	
	Scan resolution : 1um	Scan resolution : 5um
	Min. cell size : 80um	Min. cell size : 200um
	Cooling method : Forced air cooling	
Character type	Font : Numeric • English letters • Katakana • Hiragana • Chinese characters / user custom-font / TrueType font	
	Barcode type : CODE 39/ITF/2 of 5/NW7 (CODABAR)/JAN/CODE 128	
	2D code type : QR / Micro QR / DataMatrix(ECC200/GS1 DataMatrix)	
	GS1 DataBar : GS1 DataBar/GS1 DataBar CC-A/GS1 DataBar Stacked/GS1 DataBar Stacked CC-A/GS1 DataBar Limited/GS1 DataBar Limited CC-A	
	Graphic symbols : Characters and symbols • Graph(CAD)data • BMP/JPEG/PNG/TIF	
Laser cutting : Fixed point / line / point line / circle / oval		
Marking condition	Marking mode : Still engraved / mobile stamped (isokinetic / encoder)	
	Character size(HxW) : 0.1~50mm	Character size(HxW) : 0.3~300mm
Equipment spec.	Pass line height : 900 ± 20mm	
	Marking range : Max. 450mm x 360mm or Max. 510mm x 510mm (by model)	Marking range : Max. 400mm x 300mm
	Applicable substrate dimension : 80mm(X) x 80mm(Y) ~ 450mm x 360mm or 510mm x 510mm	Applicable substrate dimension : 60mm(X) x 60mm(Y) ~ 510mm(X) x 330mm(Y)
	CCD camera alignment (excluding B-300C)	
	Alignment accuracy : ± 50um	
	Built-in barcode reader	external barcode reader(excluding model B-300C)
	Built-in flipper for back side marking (SR model only)	No built-in flipper
	Built-in air blower and exhaust suction mechanism ready	Exhaust suction mechanism ready
	PCB thickness and warpage range : 0.5 ~ 4.5mm	
	PCB max. weight : ≤ 1Kg	
	PCB edge : ≥ 5mm	
	PCB clean brush and Static eliminator module after marking (option)	
	PCB loading direction : Left to Right or Right to left (Alternative)	
	Built-in PCB serial number & bar code automatically generated and TXT serial number bar code conversion	
	Support Network Type : Ethernet	
	Built-in standard connection system : SMEMA	
	Computer operation system : Windows XP	
	Operation language : Traditional Chinese / English	
	Clean room class : Class 10000	
	Power requirement: 220VAC/1Phase, 50/60 Hz, 20A	
	Operating ambient temperature : 10 ~ 40°C	
	Working ambient humidity : 30~70% relative humidity	
Factory exhaust requirement : 500 cfm		
Air pressure requirement : Clean Dry Air, Min. 5 Bar		

Model Name	C-500PV		
Dimension	800mm(W) × 1200mm(D) × 1615mm(H)		
Weight	~470kgs		
Printing Area	300mm(X-axis) × 450mm(Y-axis)		
Inkjet system	Videojet – 1620 (40 um), <b>Black Ink</b>		
Resolution	160DPI		
Repeatability Accuracy	± 100 um		
PCB	Loading size	80(X) × 80(Y) ~ 500(X) × 500(Y)mm	
	PCB thickness and warpage range	0.5mm ~ 4.5mm	
	Max. weight	≤ 1 Kg	
Inkjet	Loading direction	Left to Right or Right to Left	
	Edge width	≥ 5mm	
	Resolution	5.9 ~ 7.87mil(0.15~0.2mm)	
	Printing Angle	0 ~ 360°	
	Speed	120 ~ 285mm/sec(by font type)	
	Barcode type	1D : Code-128 · Code-39 · Interleave 2 of 5	
		2D : Data Matrix · QR code	
Standard Interface	Font type	5×7, 10×16, 16×24 Matrix of 66 Alphanumeric	
	Communication	SMEMA	
Operation Interface	Network	Ethernet	
	Hardware	17" LCD Monitor, Keyboard & Mouse	
	O/S	Windows 7	
	Language	Tradition Chinese / English	
	Operation manual	CD-R × 1, Paper Copies × 1	
Operation Environment	Temperature	13 ~ 35°C	
	Humidity	30 ~ 70% Relative Humidity	
Power Supply	220VAC / 1 Phase / 50~60 Hz / 20A		
Air Pressure	5 ~ 8 Bars; 2 SCFM		
Option Items			
1	CCD camera for Visual Alignment(± 50 um)		
2	Z-axis adjustment (0~10mm)		
3	Real-time barcode inspection( must also purchase option item 1 )		
4	Shop Floor development		