

Visit us at  
IPC APEX EXPO  
BOOTH 1460

**New SMT Stencil Technology:**

# **Nanocoatings**

**Wipe-on**

**NanoSlic® Gold**



## **Reduced Underside Cleaning**

Significant reduction in cleaning cycle



## **Transfer Efficiency Increase**

Volume increase allowing up to 0.400 Surface Area Ratios



## **Robust and Durable**

Strong coating with a hardness of 9H



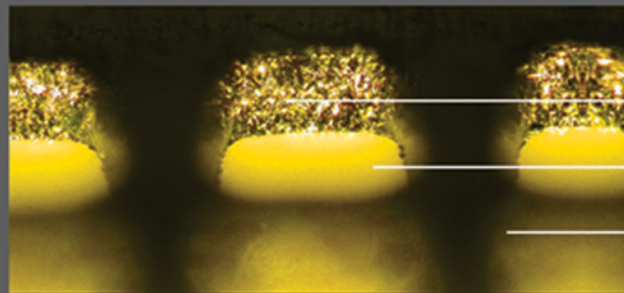
## **Coating is Visible on Stencil**

Slightly dyed coating to verify performance



Choose the best coating!

**NanoSlic® Gold**



Coated aperture wall

Aperture

Stencil underside



**Please stop by booth 1460 at APEX  
for a live demonstration**

[metstencil.com](http://metstencil.com)

609.261.2670

[sales@metstencil.com](mailto:sales@metstencil.com)