
ILLUSTRATION STUDIO **NOTTENE PRESENT THEIR FIRST
WALLPAPER COLLECTION** AT ICFE MAY 14-17TH, BOOTH 0809



NOTTENE (NEW YORK CITY , MAY 14-17 2016) Nottene, a Philadelphia based print and pattern design studio will present their first collection of hand-drawn and screenprinted wallpaper. The collection, called Matchsticks, is designed by illustrator Kimberly Ellen Hall and features the signature and delicate motifs which are a continuation of the studio's interest in finding patterns in the small details of everyday life. These seven patterns feature interchangeable colorways and papers. Rather than print the patterns digitally, the studio really wanted to push the boundaries of what is possible in screen-printed wallpaper. After creating the initial design in the studio and establishing the color palette, Nottene worked to see how much of the details and pleasant imperfections could be brought out during the creation of the screens and printing process. The idea was that the combination of hand-drawn patterns, delicate line work, textured brush strokes and fresh color palettes could result in a wallpaper that would bring a sense of intimacy through simplicity to a residential or commercial space.

With an MA in textiles from Central St. Martins in London, illustrator Kimberly Ellen Hall has drawn or designed for clients like Coach, Hussein Chalayan, Anthropologie, and the Denver Art Museum, among others. Co-founder Justin Hardison's background in advertising, client relations, project management and sound design is a perfect complement. Together, they create custom illustration and textile work out of their studio in Philadelphia.

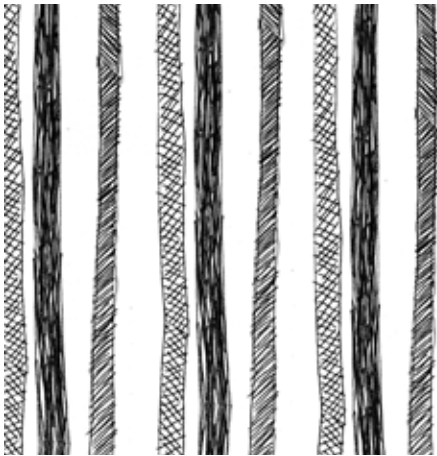
Available through design professionals and to consumers through selected showrooms.

TO THE TRADE INFO:
www.nottene.net/wallpaper
646-431-6812

PRESS INFO: mail@nottene.net
215-275-7650

PRODUCT DESCRIPTIONS

Seven lucky patterns available for 2016. All are hand drawn in our studio in Philadelphia and hand printed in New York. We offer a base palette of ink & paper colors that work harmoniously together in simple combinations that span the vivid to the restrained. Inks: Ballpoint pen, Sumi ink, Manila, Gray, Poppy, & Milk. Papers: Robins egg, Night sky, Paper, & Khaki. Custom colors can be mixed to order.



STRIPES This hand-drawn stripe mimics the natural world through imperfection of line. It looks good in any colorway, but Ballpoint pen on Paper is ace.

BRUSHES A slightly undulating pattern of brushstrokes that somehow suggests both the sea and a cloudy sky. We like it best in Milk on Khaki paper.

810 This print is for your kids room, right? What about putting it in that little closet off the stairs? In Poppy & Gray on Paper it will make you smile every time you have to pull out the winter coats.

QUILT This print is actually based on tiles we saw in Paris, but once they were drawn and transformed into a print they brought us right back to the quilt handed down from our grandmother. It's the first one we hung in our house. For a small space put it in Milk on Night Sky, but for a larger wall it's lovely in Sumi ink on Paper.

VIOLETS Inspired by our notoriously hard to bloom houseplant, and likewise this print is a labor of love. While we love the colorway presented above (Ballpoint pen and Gray on Paper) we are

dying to print it in custom colors! Pick some for us to print?

BUTTERFLIES & POLLEN Abstract but with a classic feel, this print will float right into your bedroom. It does beautifully in very restrained colorways like Milk and Manila on Robins egg.

SEASIDE (PAGE 1) Our most narrative design. A beach vacation that was all salt water, an old boat, pesky flamingos, aromatic roses, and lots of warm days became this print. You'll feel the warmth when you hang this print.
