

HANDMADE
LAMPS
ICONIC DESIGN
EXCELLENT
CRAFTSMANSHIP
BEST
MATERIALS

TABLE LAMPS ⁰⁴/CEILING LAMPS ¹²
WALL LAMPS ²⁴/FLOOR LAMPS ³³

WOKA
LAMPS VIENNA

TABLE



Reininghaus No: 20315

Kolo Moser, Wiener Werkstaette, 1903

ø: 22 cm (8,66 inch)
H: 41 cm (16,14 inch)



PLL1 No: 16

Secession, 1900

ø: 30 cm (11,81 inch)
H: 44 cm (17,32 inch)



LST1 No: 23

Adolf Loos, 1910

ø: 26 cm (10,24 inch)
H: 45 cm (17,72 inch)



PRX1 No: 21

Secession, 1900

ø: 30 cm (11,81 inch)
H: 46 cm (18,11 inch)



LST2 No: 24

Adolf Loos 1910

ø: 35 cm (13,78 inch)
H: 65 cm (25,59 inch)



HH1 No: 49

Josef Hoffmann, 1900

ø: 24 cm (9,45 inch)
H: 50 cm (19,69 inch)



HSP2 No: 2

Josef Hoffmann, 1901

ø: 26 cm (10,24 inch)
H: 40 cm (15,75 inch)



AD2 No.: 52

Desny 1924

ø: 45cm (17,72 inch)
H: 57cm (22,44 inch)



AD9 No: 59

Art Deco 1925

ø: 34cm (13,39 inch)
H: 45cm (17,72 inch)



Bureau No: 20302

Josef Hoffmann 1903

ø: 35cm (13,78 inch)
H: 55cm (21,65 inch)

TABLE



WW-S No: 20512
 Josef Hoffmann, 1905
 ø: 31 cm (12,20 inch)
 H: 55 cm (21,65 inch)



Pickler No: 20320
 Josef Hoffmann, Wiener Werkstaette, 1909
 H: 35 cm (13,78 inch)
 B: 16 cm (6,30 inch)



Wittgenstein No: 20311
 Josef Hoffmann, Wiener Werkstaette, 1905
 ø: 26 cm (10,24 inch)
 H: 56 cm (22,05 inch)



Ball Light XL No: 21002
 Christiane Büssgen, 2010
 ø: 6 cm (2,36 inch)
 L: 400 cm (157,48 inch)



XNT1 No.: 8
 Josef Hoffmann, 1901
 H: 43 cm (16,93 inch)
 ø: 30 cm (11,81 inch)



Veranda No: 20301
 Josef Hoffmann, Wiener Werkstaette, 1903
 ø: 22 cm (8,66 inch)
 H: 40 cm (15,75 inch)



WW-S142 No: 20502
 Josef Hoffmann, Wiener Werkstaette, 1905
 ø: 39 cm (15,35 inch)
 H: 60 cm (23,62 inch)



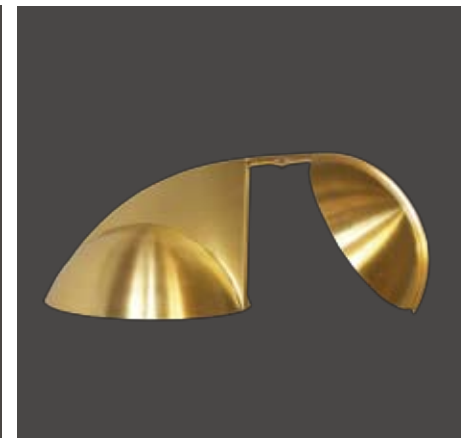
JH8 No: 78
 Josef Hoffmann, Wiener Werkstaette, 1903
 ø: 20 cm (7,87 inch)
 H: 45 cm (17,72 inch)



HSP1, No: 1
 Josef Hoffmann 1901
 ø: 26cm (10,24inch)
 H: 40cm (15,75inch)



WND1, No.: 19
 Secession 1900
 ø: 30cm (11,81inch)
 H: 46cm (18,11inch)



Piano No: 20312
 Josef Hoffmann 1903
 H: 18cm (7,09 inch)
 W: 44cm (17,32 inch)

TABLE



AD-10 No: 60

Desny, Art Deco, 1924

ø: 39 cm (15,35 inch)
H: 48 cm (18,90 inch)



Office2 No: 9406

Bauhaus, 1930

ø: 20 cm (7,87 inch)
H: 70 cm (27,56 inch)



Mantodea No: 20103

Godalming, 1950

H: 50 cm (19,69 inch)
W: 60 cm (23,62 inch)



AD-11 No: 61

Charles Martin, 1928

ø: 40 cm (15,75 inch)
H: 55 cm (21,65 inch)

CEILING



Diners No.: 9741

WOKA 1960

H: 102cm (40,16 inch)
W: 60cm (23,62 inch)
L: custom made



Knize-35 No: 20101

Adolf Loos, 1909

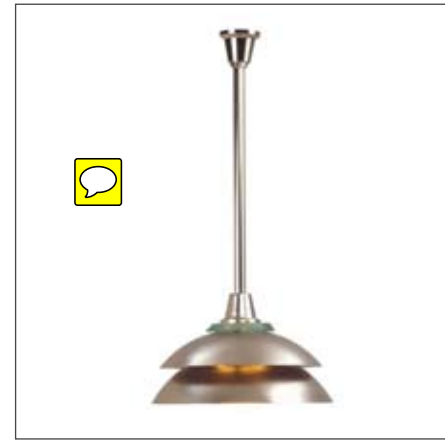
ø: 35 cm (13,78 inch)
L: custom made
also available in
ø 55 cm (21,65 inch)



JH-Josefstadt No: 9849

Josef Hoffmann, 1952

ø: 90 cm (35,43 inch)
L: custom made



TRISTAN No: 9480

Design: Bauhaus, 1930

ø: 40cm (15,75 inch)
L: custom made



Mimi No.: 1032

Walter Schmoegner 1989

ø: 130cm (51,18 inch)
L: custom made



Mistel Nr: 9942

WOKA 1960

ø: 77 cm (30,31 inch)
H: 32 cm (12,60 inch)
L: custom made

Knize-35 No: 20101

Adolf Loos, 1909

ø: 35 cm (13,78 inch)
L: custom made
also available in
ø 55 cm (21,65 inch)



Steinhof 7-fl No: 21203

Otto Wagner 1904

ø: 45 cm (17,72 inch)
H: 100 cm (39,37 inch)
L: custom made



KM2 No: 20909

Kolo Moser 1904

ø: 35 cm (13,78 inch)
L: custom made



Pendent Light No.: 20909

Josef Hoffmann 1900

ø: 30cm (11,81inch)
L: 110cm (43,31 inch) or custom made



Gallia-Primavesi No.:20908

Josef Hoffmann 1914

ø: 42cm (16,54 inch)
H: 8cm (3,15 inch)



Goldman Hula Hoop No: 20501

Adolf Loos, 1911
 ø: 70 cm (27,56 inch)
 L: custom made



AEK/75 No: 93

Vienna, 1908
 H: 75 cm (29,53 inch)
 W: 75 cm (29,53 inch)
 L: custom made



Goldman Original Nr. 20513

Adolf Loos, 1911
 ø: 70 cm (27,56 inch)
 L: custom made

Karussel No.: 9747

WOKA 1960
 ø: 54cm (21,26 inch)
 L: custom made



Snowflake No: 9743

WOKA 1960
 ø: 54cm (21,26 inch)
 L: custom made

Konzerthaus No: 20705

Ludwig Baumann 1909
 H: 40cm (15,75inch)
 W: 40cm (15,75inch)
 L: custom made



Zwadela No: 9402

Bauhaus, 1930

ø: 50 cm (19,69 inch)
L: custom made



WW-7/35a No: 62

Wiener Werkstaette Umkreis, 1903

ø: 35 cm (13,78 inch)
L: custom made
also available in
ø: 50 cm (19,69 inch)



WW-7/35-Pos No: 21006

Wiener Werkstaette Umkreis, 1905-10

ø: 50 cm (19,69 inch)
L: custom made



Stadtbahn No: 20702

Otto Wagner, 1895-99

ø: 35 cm (13,78 inch)
H: 70 cm (27,56 inch)
L: custom made



Elpos No: 9913

WOKA, 1999

ø: 50 cm (19,69 inch)
L: custom made



Brioni No: 9917

Adolf Loos, 1914

ø: 70 cm (27,56 inch)
H: 100 cm (39,37 inch)
L: custom made



Gitterpende-18 No: 20006

Wiener Werkstaette Umkreis, 1903-5

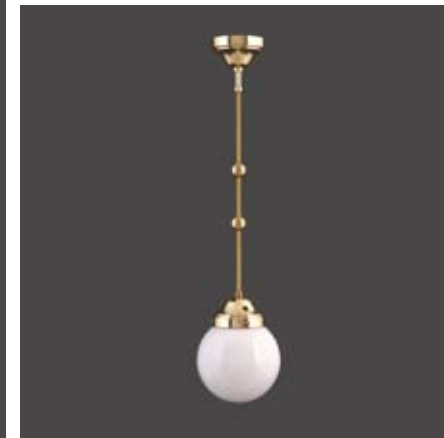
ø: 18 cm (7,09 inch)
L: custom made
also available in
ø 20 cm (7,87 inch)/25 cm (9,84 inch)



HH2 No: 50

Josef Hoffmann, 1900

ø: 48 cm (18,90 inch)
H: 100 cm (39,37 inch)
L: custom made



KM-Pende No: 20325

Kolo Moser, Wiener Werkstaette, 1904

ø: 14 cm (5,51 inch)
L: custom made



KM-1 No: 30

Kolo Moser, Wiener Werkstaette, 1904

ø: 35 cm (13,78 inch)
L: custom made



Scotch No: 9920

Vienna, 1910

H: 80 cm (31,50 inch)
W: 70 cm (27,56 inch)
L: custom made



Scotch-Pende No: 20333

Vienna, 1910

W: 13 cm (5,12 inch)
L: custom made



MB-Pende No: 20328

Kolo Moser, Wiener Werkstaette, 1904

ø: 8 cm (3,15 inch)
H: 19 cm (7,48 inch)
L: custom made



MB34fi No: 9916

Wien, 1903

ø: 45 cm (17,72 inch)
L: custom made



HH-Pende2 No: 20334

Josef Hoffmann, 1904

H: 25 cm (9,84 inch)
W: 16 cm (6,30 inch)
L: custom made



Kugelzug No: 9919

Adolf Loos, Josef Frank, 1914/25

ø: 50 cm (19,69 inch)
L: custom made



WW-Pende No: 20313

Josef Hoffmann, Wiener Werkstaette, 1904

ø: 11 cm (4,33 inch)
H: 15 cm (5,91 inch)
L: custom made

Emil No: 20408

Vienna 1900

H: 80 cm (31,50 inch)
W: 40 cm (15,75 inch)
also available in other sizes



Dining1 No: 20305

Josef Hoffmann, Wiener Werkstaette, 1903

ø: 35 cm (13,78 inch)
L: custom made

CEILING

AD-Kristall No: 9927

Vienna, 1918

ø: 75 cm (29,53 inch)
H: 120 cm (47,24 inch)
L: custom made



Stoclet-CR1 No: 38

Josef Hoffmann, Wiener Werkstaette, 1909

ø: 50 cm (19,69 inch)
H: 80 cm (31,50 inch)



Papageno No: 9926

WOKA, 1960

ø: 50 cm (19,69 inch)
H: 60 cm (23,62 inch)
L: custom made



Serge No: 20704

Josef Hoffmann, Wiener Werkstaette, 1910

ø: 40 cm (15,75 inch)
H: 90 cm (35,43 inch)

Palme 20332

Josef Hoffmann, Bakalowits, 1914

ø: 72 cm (28,35 inch)
H: 86 cm (33,86 inch)
L: custom made



Stoclet Palais No: 21101

Josef Hoffmann 1907

ø: 35cm (13,78 inch)
depth: 35cm (13,78 inch)



Werkbund No: 20803

Josef Hofmann, 1914

ø: 60cm (23,62 inch)
H: 60cm (23,62 inch)
L: custom made



3-WL No: 98
 Josef Hoffmann, 1900
 H: 28 cm (11,02 inch)
 W: 20 cm (7,87 inch)



WIA1 No: 13
 Carl Witzmann, 1929
 ø: 22 cm (8,66inch)
 H: 33 cm (12,99inch)
 W: 22 cm (8,66inch)
 D: 13 cm (5,12inch)



AST1 No: 9
 Vienna 1908
 ø: 16 cm (6,30 inch)
 H: 27 cm (10,63 inch)
 W: 16 cm (6,30 inch)
 D: 22 cm (8,66 inch)



JH-4 No: 74
 Josef Hoffmann, Wiener Werkstaette, 1903
 H: 22 cm (8,66 inch)
 W: 30 cm (11,81 inch)



Billard No: 20304
 Josef Hoffmann, Wiener Werkstaette, 1903
 ø: 15 cm (5,91 inch)
 H: 24 cm (9,45 inch)
 W: 26 cm (10,24 inch)



Floege No: 20310
 Kolo Moser, Wiener Werkstaette, 1904
 H: 23 cm (9,06 inch)
 W: 17 cm (6,69 inch)
 D: 17 cm (6,69 inch)



Damensalon No: 20307
 Josef Hoffmann, Wiener Werkstaette, 1903
 H: 26 cm (10,24 inch)
 W: 26 cm (10,24 inch)
 D: 18 cm (7,09 inch)



CR3 No: 91
 Josef Hoffmann, 1909
 ø: 25 cm (9,84 inch)
 H: 12 cm (4,72 inch)
 also available in
 ø: 35 cm (13,78 inch)/50 cm (19,69 inch)



WW-8/25 No: 44
 Wiener Werkstaette Umkreis, 1903
 ø: 25 cm (9,84 inch)
 H: 12 cm (4,72 inch)
 also available in
 ø: 35 cm (13,78 inch)/50 cm (19,69 inch)



WW-2/25 No: 81
 Josef Hoffmann, Wiener Werkstaette, 1900
 ø: 25 cm (9,84 inch)
 H: 12 cm (4,72 inch)
 also available in
 ø: 35 cm (13,78 inch)/50 cm (19,69 inch)



GRO1 No: 22

Secession, 1900

ø: 18 cm (7,09 inch)
H: 45 cm (17,72 inch)
W: 16 cm (6,30 inch)
D: 20 cm (7,87 inch)



Loosbar breit No: 20510

Adolf Loos, 1908

H: 24 cm (9,45 inch)
W: 40 cm (15,75 inch)



WTR2 No: 18

Otto Wagner, 1900

ø: 30 cm (11,81 inch)
H: 18 cm (7,09 inch)



WTR1 No: 17

Otto Wagner, 1900

ø: 30cm (11,81inch)
H: 24cm (9,45inch)



WIA3 No: 15

Carl Witzmann, 1929

ø: 14cm (5,51inch)
H: 23cm (9,06inch)
W: 14cm (5,51inch)
D: 20cm (7,87inch)



Schwarzenberg No: 1066

Hermann Czech, 1985

ø: 25 cm (9,84 inch)
H: 40 cm (15,75 inch)
W: 20 cm (7,87 inch)



Fledermaus No: 20316

Josef Hoffmann, Wiener Werkstaette, 1907

H: 28cm (11,02inch)
W: 20cm (7,87inch)
D: 25cm (9,84inch)



AD8 No: 58

Art Deco, 1924

ø: 22 cm (8,66 inch)
H: 48 cm (18,9 inch)
W: 18 cm (7,09 inch)



Aussen No: 20309

Josef Hoffmann, 1904

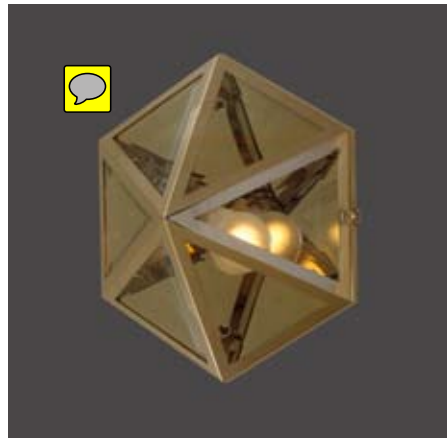
H: 30 cm (11,81 inch)
D: 60 cm (23,62 inch)



AD-7 No: 57

Art Deco, 1926

ø: 44 cm (17,32 inch)
H: 19 cm (7,48 inch)
W: 20 cm (7,87 inch)



HSP 4 No: 4
Josef Hoffmann 1901
H: 21 cm (8,27 inch)
W: 27 cm (10,63 inch)

Loosbar breit No: 20510
Adolf Loos, 1908
H: 24 cm (9,45 inch)
W: 40 cm (15,75 inch)

Loosbar breit No: 20510
Adolf Loos, 1908
H: 24 cm (9,45 inch)
W: 40 cm (15,75 inch)

Moldauer Residence No: 21207
Josef Hoffmann 1916
ø: 27 cm (10,63 inch)
H: 37 cm (14,57 inch)
D: 39 cm (15,35 inch)



WIA2 No.: 14
Carl Witzmann 1929
ø: 26 cm (10,24 inch)
H: 9 cm (3,54 inch)



JH1 No: 71
Josef Hoffmann, 1903
ø: 14 cm (5,51 inch)
H: 60cm (23,62 inch)
W: 29cm (11,42 inch)



JH2, Order No: 72
Josef Hoffmann, 1903
H: 60 cm (23,62 inch)
B: 8 cm (3,15 inch)
T: 35 cm (13,78 inch)
Shade-ø: 14 cm (5,51 inch)

Samurai No: 9820
WOKA 1960
H: 33 cm (12,99 inch)
W: 33 cm (12,99 inch)
D: 14 cm (5,51 inch)

Shogun No: 9833
WOKA 1960
H: 30 cm (11,81 inch)
W: 23 cm (9,06 inch)





AL 1 No: 34

Adolf Loos, Cafe Capua, Vienna, 1913

H: 190 cm (74,80 inch)
W: 60 cm (23,62 inch)



AL 2 No: 35

Adolf Loos, 1903

H: 188 cm (74,02 inch)
W: 60 cm (23,62 inch)



SCH1 No: 47

Josef Hoffmann, 1911

ø: 50 cm (19,69inch)
H: 180 cm (70,87inch)

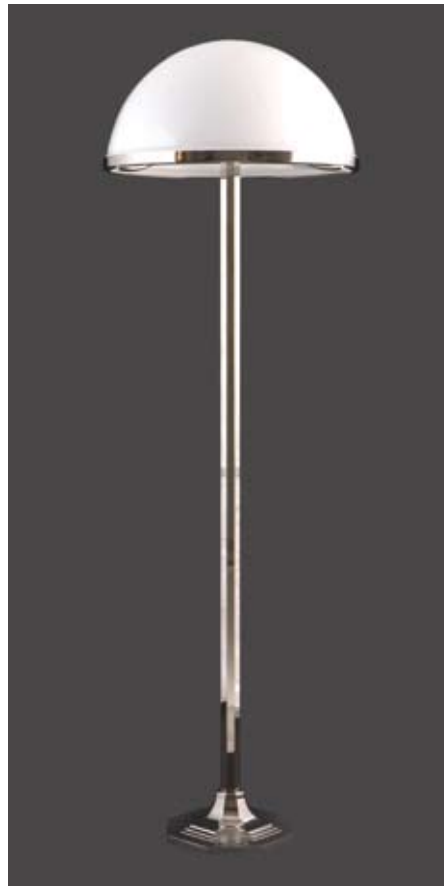


JOLLY JUMPER" Order No.: 9409

H: 170 cm (66.93 inch) B: 165 cm (64.96 inch)
Shade/Schirm-ø: 30 cm (11.81 inch)



LST3 No: 25
 Adolf Loos, 1910
 ø: 50 cm (19,69 inch)
 H: 160 cm (62,99 inch)



HSP5 NO: 5
 Josef Hoffmann, 1901
 ø: 50 cm (19,69 inch)
 H: 160 cm (62,99 inch)



FLORA NO: 9501
 France, 1930
 ø: 48 cm (18,90 inch)
 H: 180 cm (70,87 inch)



Lift No: 21111
 WOKA, 1928
 H: 200 cm (78,74inch)
 W: 55 cm (21,65 inch)



Trick, Tick, Track
 WOKA 2011
Trick No: 21107 - left
 ø: 15cm (5,91 inch)
 H: 100cm (39,37 inch)
Tick No: 21106 - center
 ø: 12cm (4,72 inch)
 H: 53cm (20,87 inch)
Track No: 21108 - right
 ø: 15cm (5,91 inch)
 H: 151cm (59,45 inch)



Carlton No.: 1039
 Bernd Bienert, 1989
 ø: 120 cm (47,24 inch)
 H: 225 cm (88,58 inch)

FLOOR



Wega No: 20801

Vienna, 1914-18

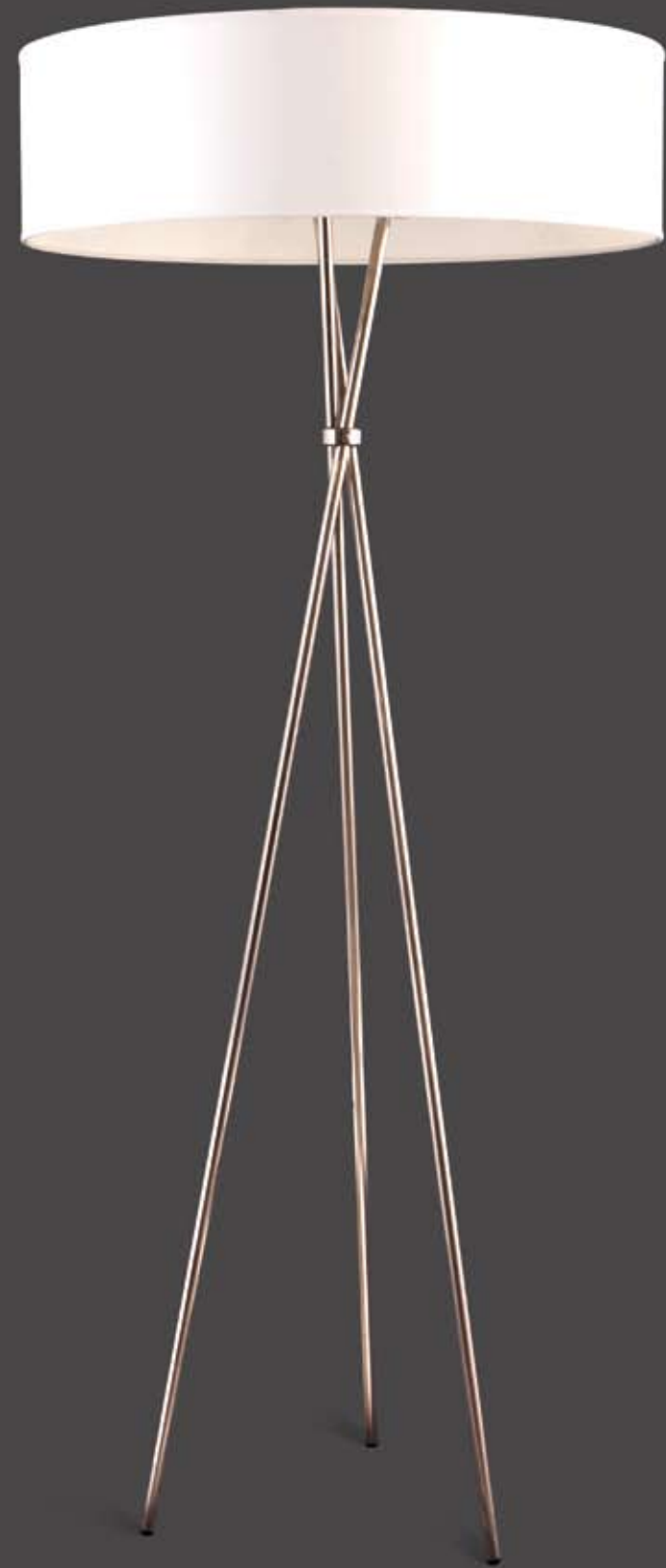
ø: 75 cm (29,53 inch)
H: 170 cm (66,93 inch)



AD-3 No: 53

Charles Martin, 1928

ø: 40 cm (15,75 inch)
H: 180 cm (70,87 inch)



Quo Vadis No: 9410

Wolfgang Karolinsky, 1994

ø: 70 cm (27,56 inch)
H: 165 cm (64,96 inch)

All the designs shown here are protected under copyright law. Woka has the property rights to manufacture and sell these products holding the exclusive rights for manufacturing and distribution. Copying will be prosecuted.

WOKA LAMPS VIENNA
Singerstraße 16 | 1010 Wien | Austria

T. +43 1 5132912 | F. +43 1 5138505
mail@woka.com

Opening Hours Showroom:
Mo - Fr: 10 am - 6 pm CET | Sa: 10 am - 5 pm



For our full product range please visit www.woka.com



IMPRINT

Concept and Design by Willem Krauss
All Photos by WOKA

© 2013 by WOKA Lamps Vienna | All Rights reserved