



PERFORMANCE BLINDERS



BLINDER ARC 640 - FRONT 640 LUMENS



BLINDER ARC 220 - FRONT 220 LUMENS



BLINDER ROAD 400 - FRONT 400 LUMENS



BLINDER ROAD 250 - FRONT 250 LUMENS



BLINDER ROAD R70 - REAR 70 LUMENS



BLINDER MOB V - REAR 44 LUMENS



URBAN BLINDERS



BLINDER MINI - FRONT 20 LUMENS / REAR 11 LUMENS



BLINDER MOB - FRONT 80 LUMENS / REAR 44 LUMENS



SILICONE LIGHTS



FROG STROBE - FRONT 8.5 LUMENS / REAR 2.5 LUMENS



POP LIGHTS



POP I - FRONT 35 LUMENS



POP II - FRONT 60 LUMENS



POP R - REAR 5 LUMENS



STVZO BLINDERS



BEAM 300 - FRONT 300 LUMENS



BEAM 170 - FRONT 170 LUMENS



BEAM 220 - FRONT 220 LUMENS



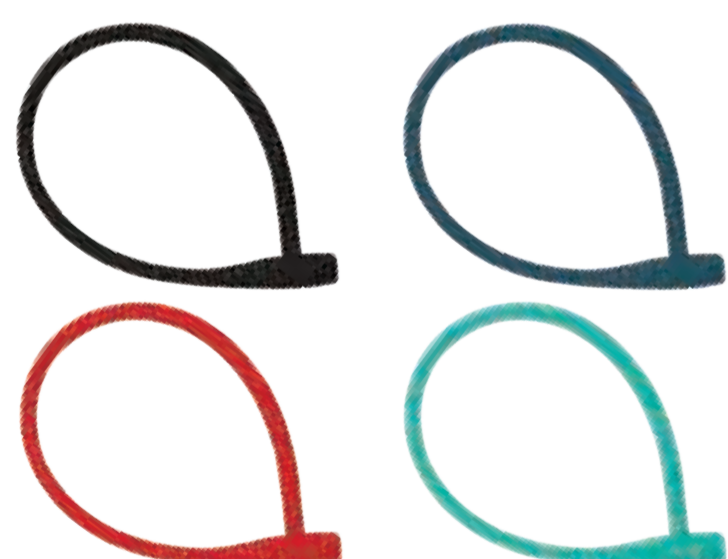
MOB STVZO - FRONT 80 LUMENS / REAR 8 LUMENS



LOCKS



KRANSKY - CONVENIENCE: 4 SECURITY: 8



KABANA - CONVENIENCE: 5 SECURITY: 7



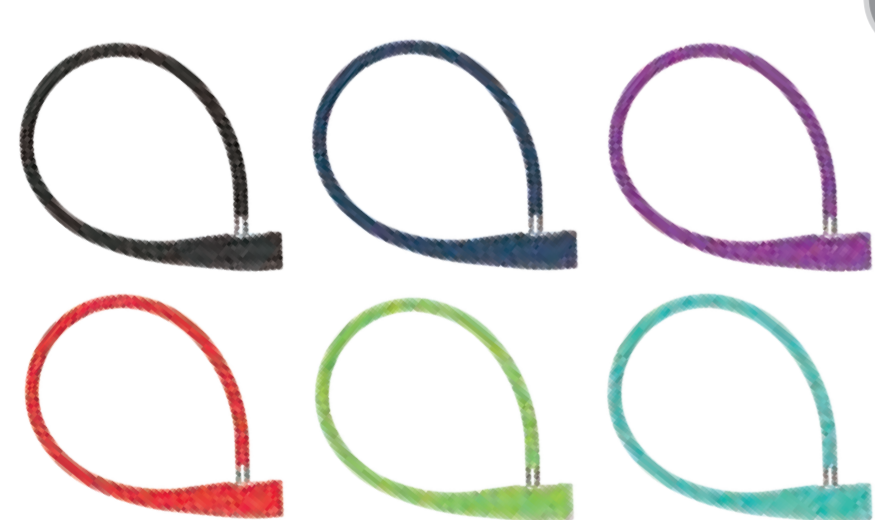
STRONGMAN - CONVENIENCE: 9 SECURITY: 10



BOUNCER - CONVENIENCE: 8 SECURITY: 9



WIENER - CONVENIENCE: 6 SECURITY: 6



PARTY COIL - CONVENIENCE: 7 SECURITY: 6



STRAIGHT JACKET - CONVENIENCE: 8 SECURITY: 9
FATTY & SKINNY AVAILABLE



RINGMASTER - CONVENIENCE: 9 SECURITY: 3
1.2 & 2.2M AVAILABLE



PARTY COMBO - CONVENIENCE: 7 SECURITY: 6



TWISTED COMBO - CONVENIENCE: 8 SECURITY: 6



BELLS



OI CLASSIC - LARGE & SMALL



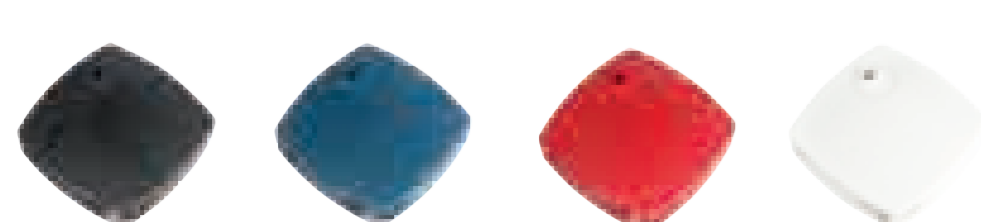
OI ELITE - LARGE & SMALL



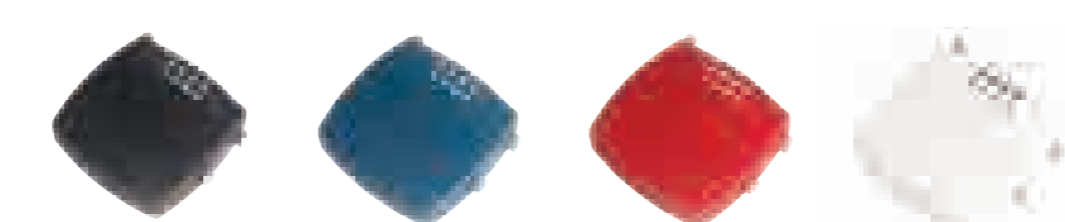
OI VINTAGE - LARGE & SMALL



MILKMAN - CONVENIENCE: 9 SECURITY: 4



MILKMAN COMBO - CONVENIENCE: 10 SECURITY: 4



TWITTER.COM/KNOG

FACEBOOK.COM/KNOG.PEEPS

INSTAGRAM.COM/KNOG

knog.

Blinder MINI

INTEGRATED USB, FITS AERO
3 DISTINCT LED VARIATIONS



KNOG.COM.AU



BICYCLE BELL

DISTINCTIVE TONE
LOW PROFILE



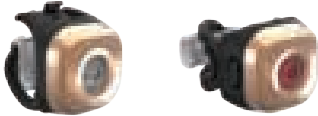


KNOG.COM.AU

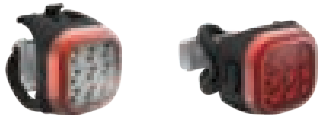


KNOG BLINDER MINI SPECIFICATION SHEET

KNOG BLINDER MOB



DOT



NINER



CHIPPY

OUTLINE

The Blinder MINI has three characters in the gang. "Dot" with a single powerful LED. "Niner", so called for its array of 9 LEDs. And "Chippy", with Chips on Board technology giving a panel of light. These surface mounted LEDs punch well above their weight, with the 20/11 lumens for front/rear getting you seen from over (800m) away. Niner and Chippy have reflected faces for added safety, and Dot, vain as she is, has a faceplate for added style and comes in 4 colours. With a weight of only 15 grams the light uses its tool-less attachment to securely connect to handlebars and frames of 22-32+mm.

SPECIFICATIONS

- **Dimensions:** 31 x 31 x 14mm (excl strap)
- **Weight:** 18g
- **Materials:** UV-Resistant Industrial grade silicone, Polycarbonate Housing, Optical grade PMMA Lens, Hard-Anodised aluminium fascia.
- **USB Rechargeable Lithium Polymer Battery (USB).** This saves using about 600 AAA Alkaline batteries during the light's lifetime.
- **Front Light:** 20 Lumens (calculated) **Rear Light:** 11 Lumens (calculated)

FEATURES

LEDs: Efficient LEDs designed to provide maximum brightness level for up to 90% of the battery burn time for each mode. Rather than LED brightness deteriorating during your ride.

Lens: Use of an optic design to provide a balanced ratio of beam width and distance to safely illuminate you and the path ahead.

Visibility: Light is visible over 500 metres.

Light Modes: 5 light modes: 1. Steady, 2. Strobe Flash, 3. Fading Flash, 4. Lightning Flash, 5. Eco Flash.

Run Time: Blinder MINI front models last 1.8-2.5 hours in Steady mode, 3.5-4 hours in Strobe Flash, 3-3.8 hours in Fading Flash, 3.5 hours in Lightning Flash and 10-11.5 hours in Eco Flash.

Blinder MINI rear models last 1.8-2.2 hours in Steady mode, 3.5 hours in Strobe Flash, 3-3.2 hours in Fading Flash, 3-4.5 hours in Lightning Flash, 10.5-11 hours in Eco Flash.

Charge Time: 2.5 hours

Battery: Rechargeable Lithium polymer battery via integrated USB plug.

Charge Type: Via integrated USB plug. Waterproof, tough and can be plugged in directly - no need for cable.

Button: New longer button push on (0.75sec) prevents accidental activation of your light. Short presses switch modes continuously. Similarly, the light is switched off with a long button push off (2 seconds).

Storage Mode: Storage mode provides the best longevity for your Blinder MINI light. Repeat this procedure every 3 months thereafter if the light isn't being used. (Refer to the instructions online.)

Straps: Replaceable straps for tool-less attachment

Front: 1 x Short (22 - 27mm) 1 x Medium (27-32mm)

Rear: 1 x Short (22 - 27mm) 1 x Medium (27-32mm) 1 x Long (32mm+) Compatible with Aero bars.

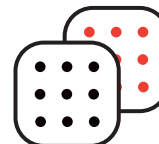
100% Waterproof: The Blinder MINI is IP67 Tested and 100% waterproof against all elements.

Testing: The Blinder MINI has been tested against the following; Drop tests, corrosion tests, UV tests, Electrical shock and static, vibration and impact, temperature and humidity, cycle testing and CE certification.

Blinder MINI features



DOT



NINER



CHIPPY

	DOT	NINER	CHIPPY
NO. OF LEDS	Front: 1 Rear: 1	Front: 9 Rear: 9	Front: 9 Rear: 16
TYPE OF LED	Front & Rear: Lumileds 3535L	Front: Ligittek 3528 Rear: Luminous 2016	Front & Rear: COB
BEAM ANGLE	20°	90°	120°



453 CHURCH ST
RICHMOND
VICTORIA 3121
AUSTRALIA

1 Aug 2016 PRESS RELEASE:

“Oi” : KNOG LAUNCHES REVOLUTIONARY NEW BELL

Australian cycling accessory brand Knog - known best for its Frog and Blinder lights - has launched a remarkable new style of bicycle bell. The “Oi”, so called because of its unique O shape and attention-grabbing design brings the humble analogue bike bell up to date.

Knog used the Kickstarter platform in March to test the concept and it was the most successful bike-related Kickstarter project on record. In the first week of opening pre-orders in July, Knog received 3000 orders in 5 days! As an added twist, Knog slightly updated the design for the trade version, which has a curve on the ringer. Kickstarter backers, therefore, get an exclusive flat ringer.

At USD \$19.95 / €19.90 / AUD \$29.95, the Oi is competitively priced against other premium bells. The sound is crisp and elegant, but the form factor is the most noticeable element. Doing away with the pimply dome, the Oi hugs the handlebar. “Heard and not seen” almost.

Knog have not only created a new bike bell, but re-imagined the age-old idea that a bell needs to be dome-shaped.



“Bells are the first thing you unscrew from your new bike” explains Knog CEO Hugo Davidson. “What if a bell looked great and sounded even better? If it was discreet, but really stood out through elegant design. With Oi, we have appealed to a breadth of personalities and riding styles without compromising any”. Davidson is referring to the 4 finishes (blk, copper, brass, silver) that come in two sizes to fit all handle bars.

For more images, [click here](#).

For more information contact Sean Wilkinson on Sean@knog.com.au



453 CHURCH ST
RICHMOND
VICTORIA 3121
AUSTRALIA



LARGE (L)



FOR HANDLE BAR CONDITIONS: 26.25mm
HANDLE & 26.25mm (26.25mm) HANDLE BAR
26.25mm (26.25mm) HANDLE BAR
(STANDARD WEIGHT 2g)

Note, Ks model
has flat ringer

SMALL (S)



FOR HANDLE BAR CONDITIONS: 26.25mm
HANDLE & 26.25mm (26.25mm) HANDLE BAR
26.25mm (26.25mm) HANDLE BAR
(STANDARD WEIGHT 2g)