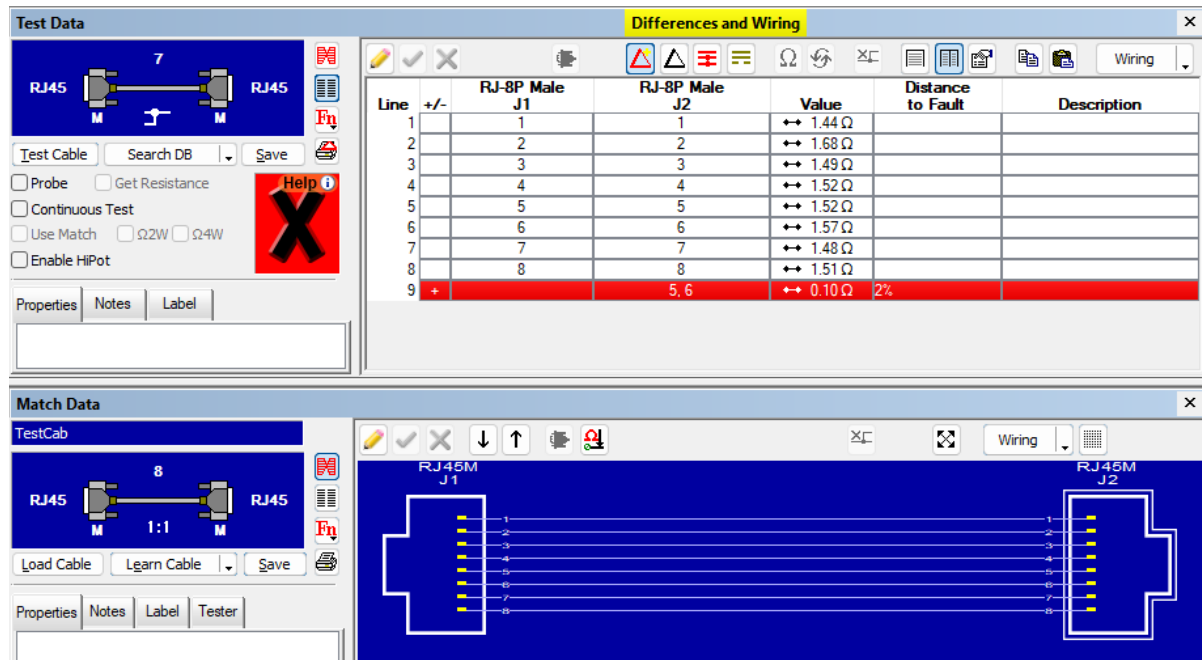


CableEye® Wiring Analyzers Check Distance to Fault (Open/Short)

New Software Release | Complimentary with active PSS!

April 13, 2023

CAMI Research Inc. (Acton, MA) manufacturer of the **CableEye®** automation-ready cable and harness test system, has released a distance to short measurement capability to supplement the distance to break measurement. This new feature is available with the latest version of software. As usual, owners of systems with an active Product Support Subscription (PSS) may download a complimentary software upgrade. Activate "Distance to Fault" option to find distance to a break or short. Requires the model M4 low voltage continuity tester, or an HVX-series HiPot tester fitted with the Advanced Measurements option.



Configuration

The company has been a leader in innovating highly configurable test solutions for simple and complex multiconductor cables and harnesses for thirty years. CAMI provides these advanced wiring analyzers and guided assembly systems to discerning global customers who require accurate and dependable assembly and testing in order to deliver top quality product. Systems are used for countless test applications of products destined for Transportation, Aerospace, Energy, Appliances, Medical Devices, Defense, Robotics, Telecom and much more. Trusted by industry leaders such as CERN, Ford, GE, Hitachi, NASA, Abbott, TESLA, Lockheed Martin, Raytheon, Airborn, Furukawa, TE Connectivity, and the Nobel prize-winning group, LIGO, thousands of test systems have shipped globally over the years.

All **CableEye** testers ship with comprehensive software providing test functions, connectors database, graphic wiring display, reporting, data logging, automation scripting and many more features. Truly future-ready, this

software is readily upgradable so that in twenty years, your system will have even more features than when it was purchased. In this way, owners of older systems can download the latest software to enable this new “Distance to Fault” measurement feature. Software upgrades are complimentary if the system is under an active Product Support Subscription. The new “Distance to Short” measurement supplements the already available “Distance to Break” measurement. Activate “Distance to Fault” option to find distance to a break or short.

Displayed on any sized screen you desire, the color-coded graphic-rich display provides clarity and, at the click of a button, you may visualize the wiring schematically or by netlist. Components are automatically detected and displayed (including Diode orientation), wiring faults are color-coded, and full measurement data is provided for every pin-to-pin connection. Another click provides a detailed customizable report, complete with wiring schematic and netlist, for your own records or for your customer. A short (red) is clearly identified in the netlist view shown in this screenshot, and both audio and visual signals indicate the harness test has failed. The distance to fault is provided in percent of total cable length. The match data (in wiring schematic view) is the data against which the cable is being tested and is shown here in the lower half of the image.

Exacting Reporting Standards

CableEye software allows customers to meet the most exacting reporting requirements of government-contracted and ISO 9000-style certified companies.

EWPT 2023

Learn about the advantages of CAMI and **CableEye** equipment at the EWPT show in Milwaukee (Booth 1503). Ask a CAMI representative how to win \$500 in **CableEye** accessories.

Register for CAMI’s workshop “**Improving Reliability of Continuity and HiPot Testing**” being given on Tuesday, 16th May, and attend CAMI’s conference seminar “**Risks of Over-Specifying Test Requirements: Testing Shielded Cables at High Voltage**” taking place on the Wednesday.

Warranty

All new testers ship ready-to-use with a two-year Product Support Subscription (PSS) comprising warranty, free tech support, complimentary software upgrades and more. The PSS is renewable, though not required for tester operation.

Availability & Domestic US Pricing

Available immediately, the “Length to Fault” measurement capability comes with the standard software shipped with every new **CableEye** model M4, or HVX-Series testers fitted with Advanced Measurement option. Customers who have previously purchased these models may upgrade their software to gain the new capability. Upgrade is complimentary if the system has an active Product Support Subscription. Feature requires software v6.1-B1862 or later.

Contact sales@camiresearch.com or (978) 266-2655 for a quote.

Note: Prices are USA only and subject to exchange rates, freight and import costs. Contact your local **authorized distributor** for local pricing.

CAMI Research produces expandable and upgradable diagnostic Cable & Harness Test Systems for assembly, prototyping, production, and QC of standard or custom cables. CableEye® Testers display, and document basic electrical properties such as continuity, resistance, capacitance, dielectric breakdown, insulation resistance, miswires, and intermittent defects.

camiresearch.com

Scan to
Discover!

